



RAILWAY MUSEUM

Fusion of Technology, History and Art



6 Nemanjina Street,
Belgrade

zeleznicesrbije.com

INTRODUCTION

THE RAILWAY MUSEUM comes among technical i.e. transport museums, but it cannot be exclusively regarded as such.

The railway development in Serbia is closely related to the MAJOR POLITICAL CHANGES in the late 19th and throughout the 20th century.

Therefore, the Railway Museum can be considered as TECHNICAL AND HISTORICAL MUSEUM.











ARTISTIC COLLECTION

Artistic collection has 250 ITEMS and features a great number of paintings with railway motifs.

Among the painters many representatives of SOCIAL REALISM are to be found.

One of the most important item is the painting “THE YOUTH BUILDING THE TRACK” by Boža Ilić. Apart from this painting, the collection also includes works of Vasilij Reznikov, Stane Kumar, Emanuel Vidović, Mića Popović and others.





**THE YOUTH BUILDING
THE TRACK**
by
Boža Ilić



YOUTH RAIL MOTIF
by
Vasilij Reznikov



PANČEVO
BRIDGE
RENEWAL
by
Mića Popović

APPLIED ARTS COLLECTION

The collection of applied arts has 47 items.

The most significant is furniture from the office of **MEHMED SPAHO**, the Transport Minister from 1935 to 1939. This is a **SITTING SET** with arm rests and legs made from engraved Caucasian walnut, with a dominating griffin motif.

The furniture represents the **MASTER WORK** of artisans from Ohrid.





MEHMED SPAHO'S SITTING SET
by artisans from Ohrid



FROM THE APPLIED ARTS COLLECTION

HISTORICAL COLLECTION

There are 1516 items in the historical collection.

The **SILVER MEDAL** decorated with emeralds, which was assigned in 1938 by the company “**WAGON LITS**” to its worker **MILAN CIGANOVIĆ**, should be particularly emphasized.





FROM THE HISTORICAL COLLECTION

HISTORICAL COLLECTION LIST

- Railway uniforms and official emblems
- Flags and pennants
- Stamps, seals, and hallmarks
- Sport awards and trophy
- Weapons and military equipment from World War II
- Social awards and recognitions
- Geographical maps and schemes
- Photo collection (period 1876-1941)
- Photo collection (period 1941-1995)
- Railway posters
- Postcards
- Archive material (prior to 1941)
- Archive material (1941-1945)
- Archive material (1946-1995)

TEHNICAL COLLECTION

The technical collection includes 1569 items.

There is **OVER FIFTY LOCOMOTIVES** in this collection, as well as **TWENTY WAGONS** for normal gauge.



NORMAL GAUGE LOCOMOTIVE



NORMAL GAUGE WAGON



NARROW GAUGE LOCOMOTIVE



NARROW GAUGE WAGON



FROM THE HISTORICAL COLLECTION





LOCOMOTIVE AND WAGON TABLES
FROM THE TECHNICAL COLLECTION

TECHNICAL COLLECTION LIST

- Narrow gauge locomotives
- Narrow gauge wagons
- Normal gauge locomotives
- Normal gauge wagons
- Engine wagons, engine trains, railbus
- Track facilities
- Special railway vehicles
- Locomotive and wagon maintenance equipment
- Work and protective equipment
- Signal and safety devices
- Telecommunication devices
- Braking devices
- Electro devices with general purpose
- Measuring instruments
- Plates
- Office equipment
- Railway station devices
- Movable property at railway station buildings

POŽEGA NARROW GAUGE DEPARTMENT

The Department was officially opened on a ceremony on April 12th, 1990. It is located near the new railway station, which was built for the purposes of the **NORMAL GAUGE RAILWAY BELGRADE-BAR**.

Right through the middle of the green area, the superstructure and substructure stretch in the total **LENGTH OF 645M**, with three station tracks and one track which leads to the **TURNTABLE**.

The Department has **8 STEAM LOCOMOTIVES**, of which 2 locomotives for 600mm gauge and 6 locomotives for 760mm gauge.

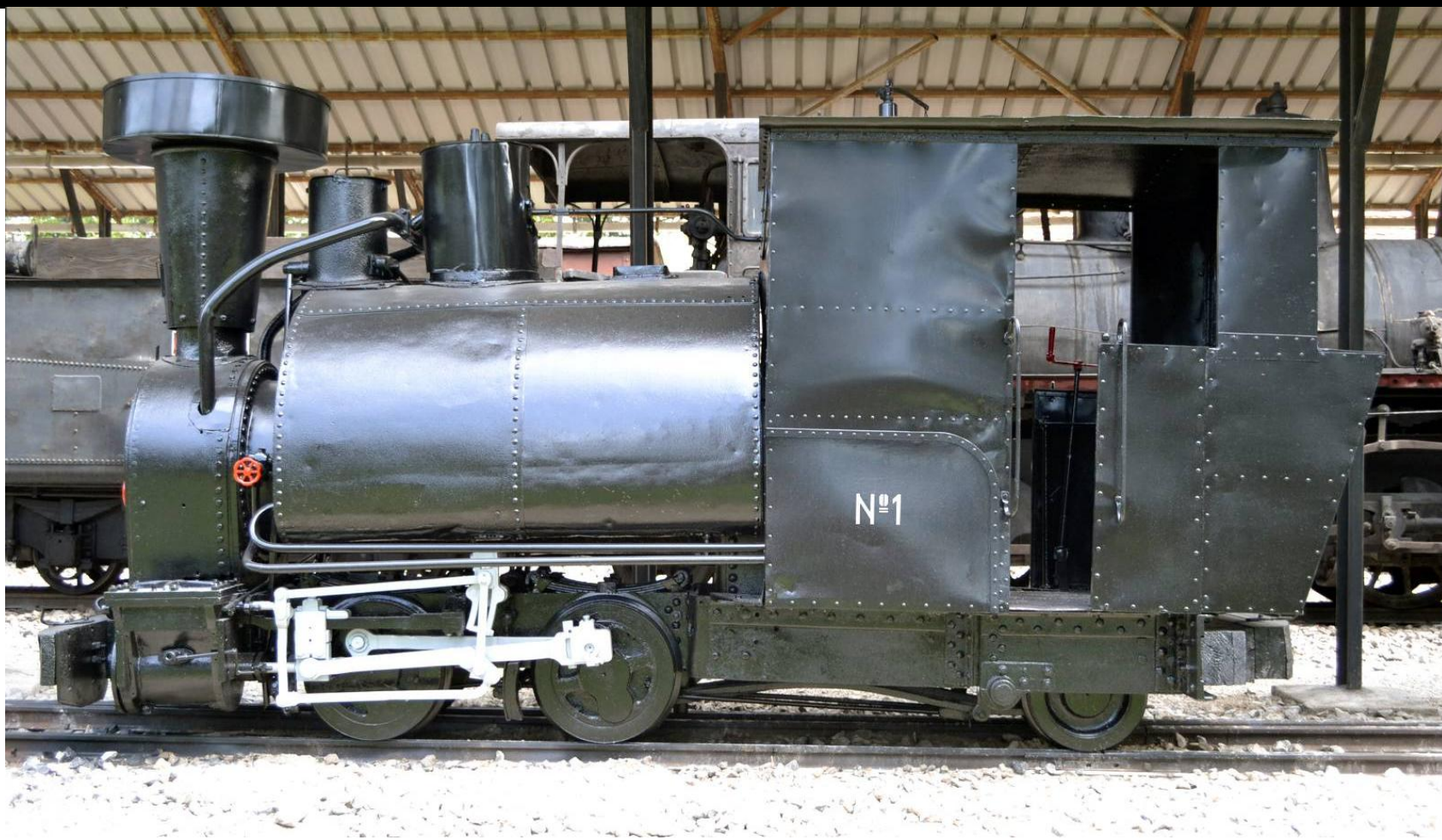




POŽEGA NARROW GAUGE DEPARTMENT



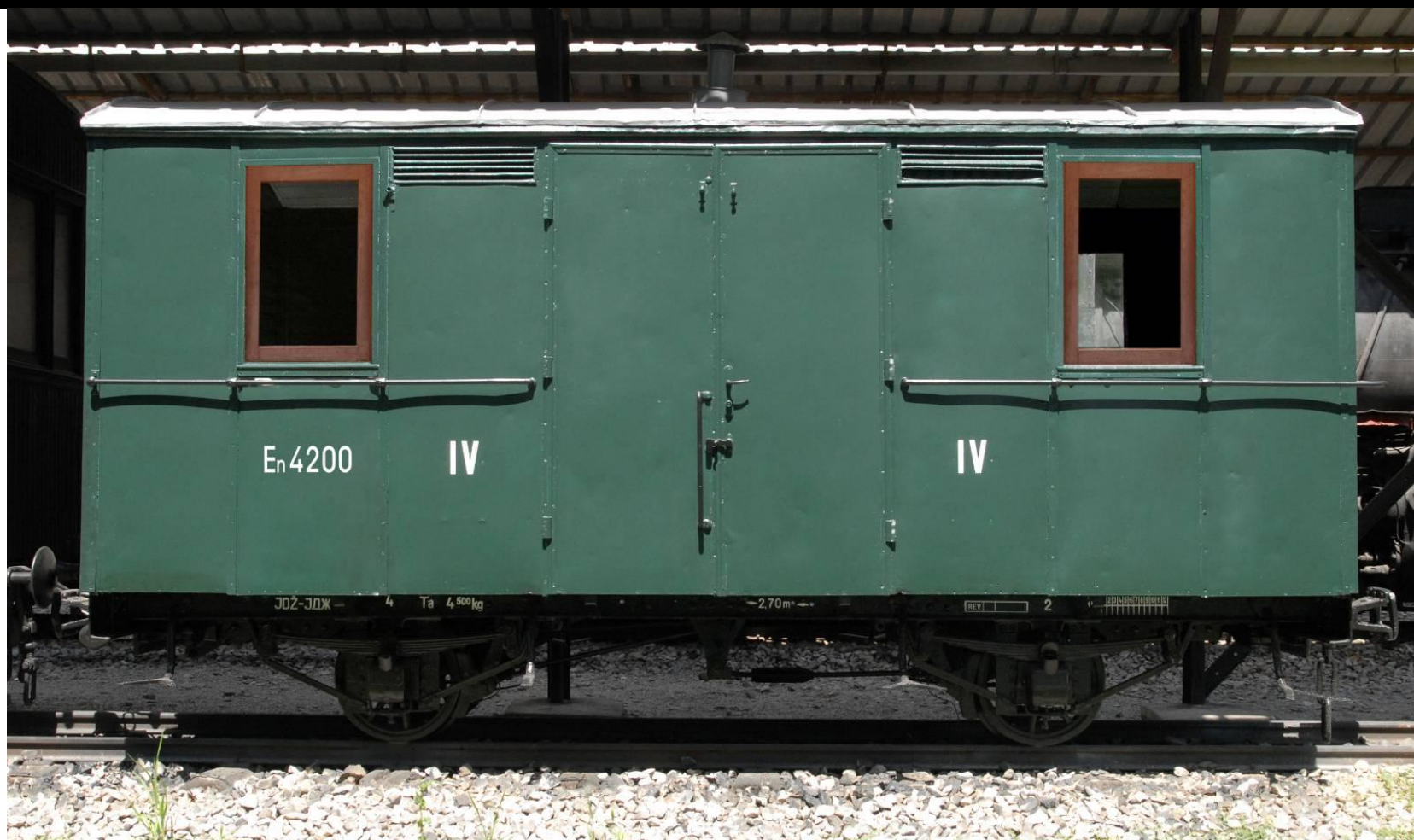
The steam locomotive 760mm gauge named [RAMA](#) was built in 1873 in Munich Kraus Factory.



In May 1882 the first steam locomotive in the Kingdom of Serbia was built, named in honor of the King Milan Obrenović [MILAN](#), but also known under the name [No1](#).



Locomotive **KOSTOLAC** is a steam locomotive of 600mm gauge, built in 1916 in „Baldwin“ factory in Philadelphia. There were couple of hundreds of these locomotives used during the **FIRST WORLD WAR**, and on railway lines of Macedonian Front. This is a very **ODD LOOKING LOCOMOTIVE** that has two boilers, two steam engines, two frames and common locomotive cab, so it is called the **“TWO-HEADED DRAGON”**.



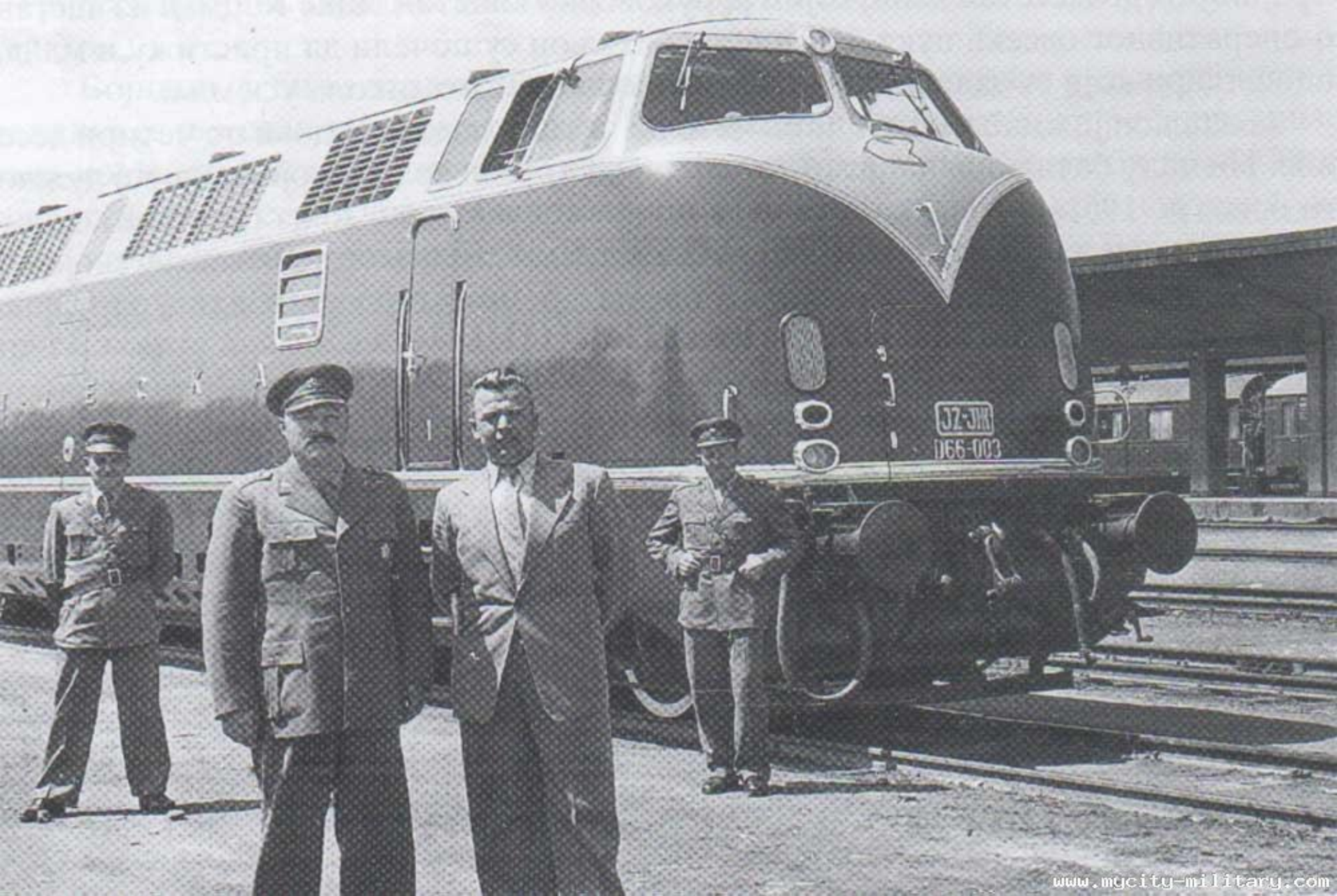
Two-axle passenger wagon of class **En 4200**. It is the **OLDEST PASSENGER WAGON** set in the country and they were used during the Austro-Hungarian administration in the Bosnia and Herzegovina territory.

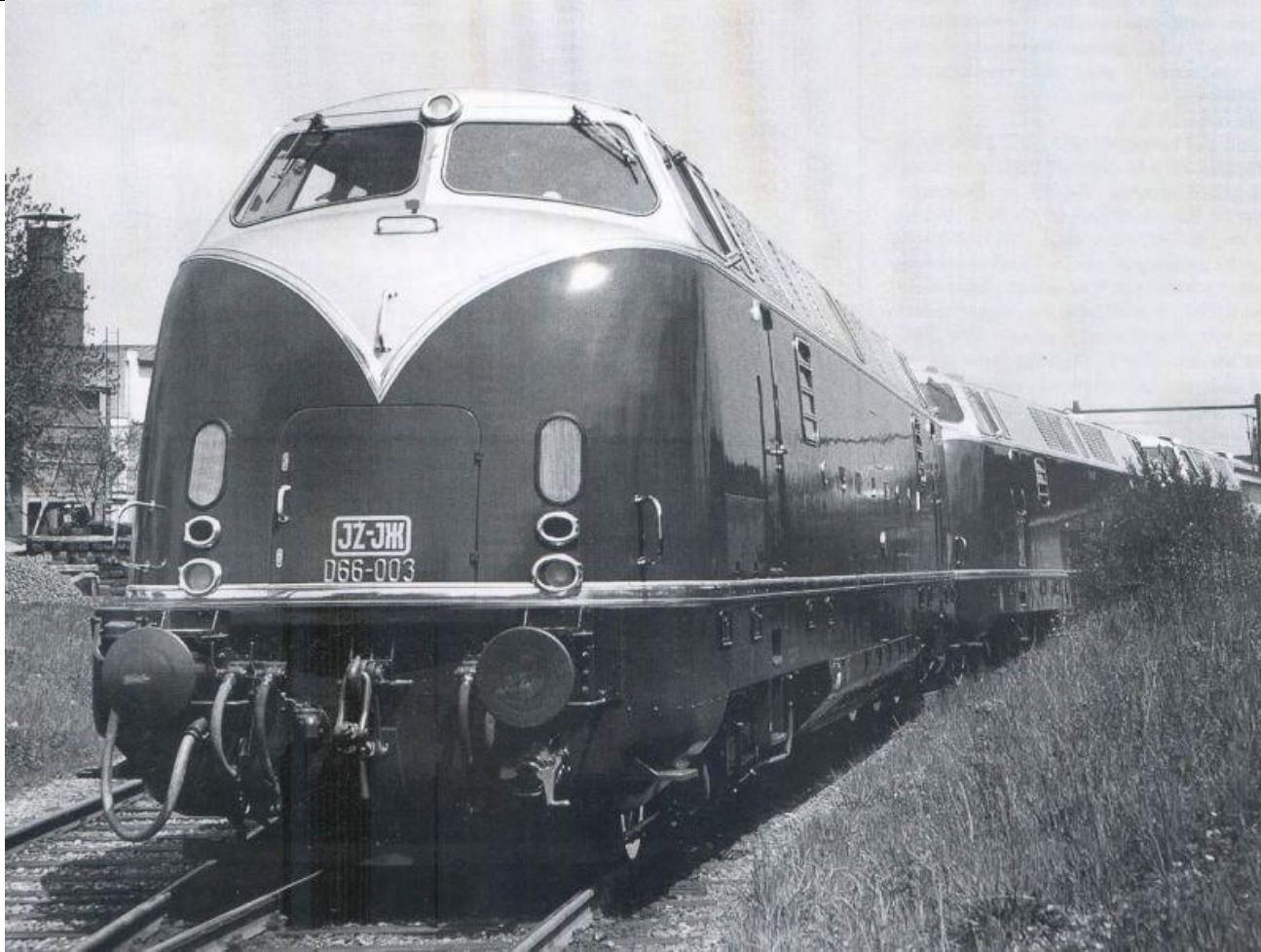


Four-axle tank wagon series [R 84702](#), operated on all narrow gauge lines, and, at the end on Paraćin – Zaječar railway line. This is a wagon with the [MANUAL AIR BRAKE](#), with net weight 9470kg, carrying capacity 15 000kg, 9000mm long, 2400mm wide and 3000mm high.



THE BLUE TRAIN





The Blue Train is the name of SPECIAL TRAIN made for JOSIP BROZ TITO, former president of Yugoslavia.



On tracks behind BLUE TRAIN GARAGE in Topčider, Belgrade,
THREE DIESEL-HYDRAULIC LOCOMOTIVES are exhibited, which hauled
the Blue Train in the period from 1957 to 1978.
Those are locomotives: DINARA, KOZARA and SUTJESKA.



BLUETRAIN LOCOMOTIVE: JŽ 761-001 DINARA



BLUE TRAIN LOCOMOTIVE: JŽ 761-003 SUTJESKA



The MOST FAMOUS LOCOMOTIVE that hauled Blue Train is locomotive series JŽ 11-022 with tender. It was manufactured in 1947 IN BUDAPEST. This locomotive is standing as a memorial in front of Main Railway Station in Belgrade.

CONSERVATION WORKS

In the **SPRING OF 2012**, the conservation works were carried out on **FIVE MAJOR EXHIBITS**, namely on locomotives: **RAMA**, **MILAN** and **KOSTOLAC** as well as on passenger wagon class IV **En 4200** and on tank wagon **R 84702**.

RAMA



THEN

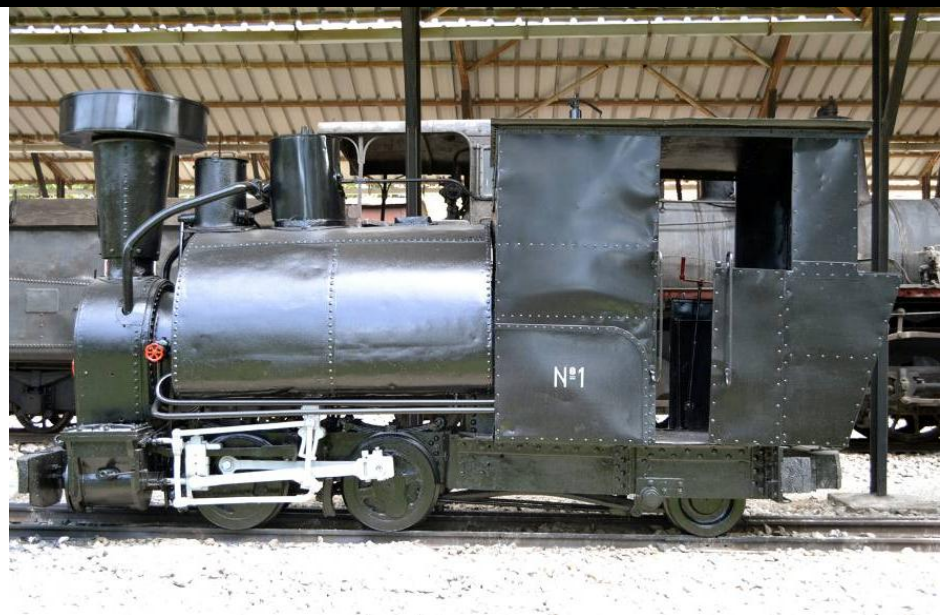


NOW

MILAN



THEN



NOW

KOSTOLAC



THEN



NOW

En4200



THEN



NOW

R84702

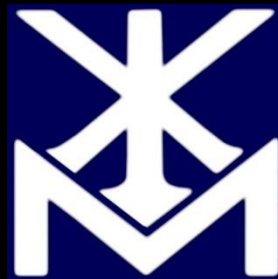


THEN



NOW

Conservation works were completed on April 11th 2012.



VISIT RAILWAY MUSEUM IN BELGRADE

NEMANJINA ST 6, +381 11 36 10 334

ZELEZNICESRBIJE.COM
FACEBOOK.COM/ZELEZNICKI.BEOGRADU