



# Crown Bridges

Tram connection  
to Laajasalo

PROJECT BROCHURE  
13 JANUARY 2016



The Crown Bridges project will connect the coastal city districts in eastern Helsinki with the inner city. The project covers a tram line as well as pedestrian and bicycle routes between the city centre and Laajasalo. The connection will form part of Helsinki's core tram network as well as part of the city's cycling network. The project will have an impact on the entire Helsinki metropolitan area public transport system.



## Crown Bridges tram connection to Laajasalo



### The Crown Bridges project

The project covers a tram line as well as pedestrian and bicycle routes between the centre of Helsinki and Laajasalo. The tram lines that form the basis of the project are the Central Railway Station–Yliskylä line, which will be a frequently trafficked core line, and the Kolmikulma–Haakoninlahti line, which will be a supplementary line to Kruunuvuorenranta.

Three alternative routes have been studied for the tram connection in the city centre. The option that goes through Hakaniemi was shown to be superior to the others in the comparison. Two alternative routes have been studied for Yliskylä, of which the more northern route through the centre of Yliskylä will be furthered.

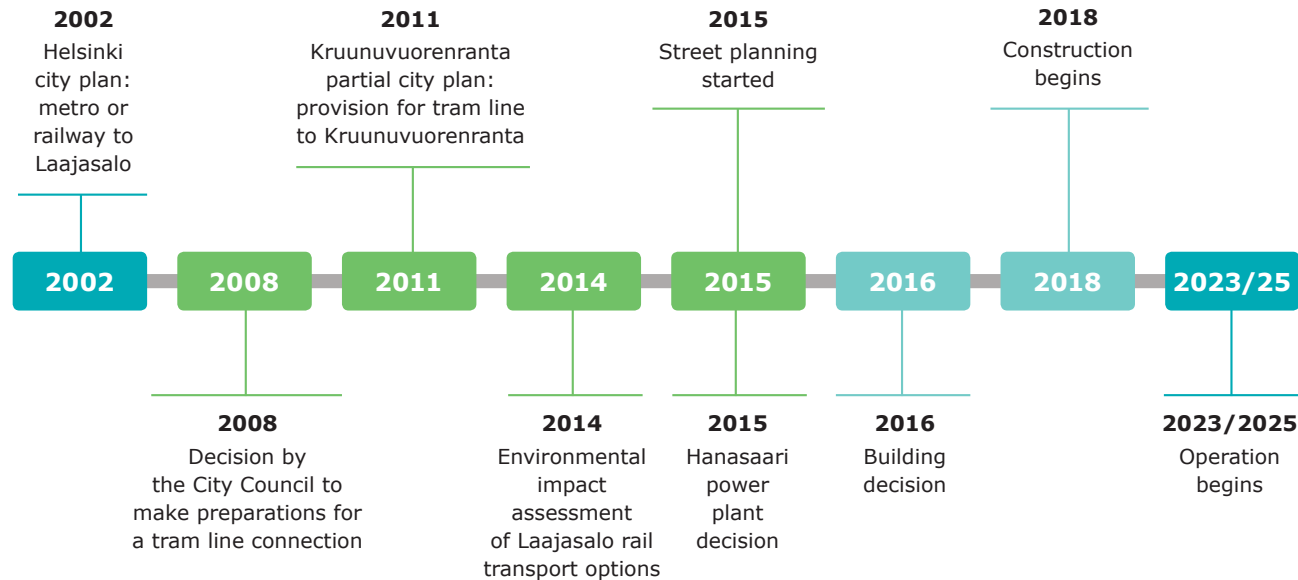
According to predictions, once completed, the tram line connection between Kruunuvuorenranta and Kala-satama would be used by around 37,000 people every day. Around 3,000 cyclists and pedestrians are predicted to use the route every day.

The objective of the City of Helsinki is to increase the proportion of journeys made using sustainable modes of transport. The Crown Bridges project will promote sustainable journeys by increasing the proportion of journeys made by walking, cycling and use of public transport in Helsinki.

### Crown Bridges meets land use needs

The population of Helsinki is predicted to grow by up to 250,000 inhabitants by 2050. This poses challenges for

## Progression of the project



public transport and the city structure. New residential and working areas are being constructed in areas such as Kalasatama, Kruunuvuorenranta and Jätkäsaari.

The current transport network will not ensure functional transportation in the Laajasalo and Kruunuvuorenranta of the future. The Crown Bridges project will create a well-flowing, competitive and pleasant tram line connection to the city centre.

As far back as the 2002 City Plan, the idea of a connection from Laajasalo and Kruunuvuorenranta to central Helsinki was addressed. Since then, this has been defined in more detail.

The transport connections to Korkeasaari will also be significantly improved thanks to the project.

### Crown Bridges as a part of the transport system

Crown Bridges will form part of the rail transport

network and a new core direction for rail transport. The tram line will offer a direct link to the metro, local trains and inner city tram routes. With the new line, public transport will connect the various regions even better than before.

Thanks to the project, the conditions for cycling and walking will also be improved. The project will create a cycle path from the city centre to Laajasalo and bring Kalasatama within walking distance of the city centre. The project's cycle paths will be connected as a part of the cycling network.

The connections between Laajasalo and Herttoniemi will remain good. Feeder bus transport will remain in operation, with Kruunuvuorenranta getting its own connection. The Crown Bridges project will reduce traffic growth on Laajasalontie and in Herttoniemi, as well as helping to preserve the metro's functional capacity.



Illustrations: WSP Finland Oy

## News

Currently, the project is at the pre-planning and cost accounting stage, which forms a basis for decision making. The project requires around 15 plan changes, of which approximately half are at the decision making process. The most significant ones, the Kruunuvuorenranta public transport connection traffic plan and the land use plan, were approved by the City Council in November 2015. They are related to the connection from Kalasatama to Korkeasaari and Kruunuvuorenranta.

A building decision has not been made on the project yet. The decision-making process will be launched in early spring 2016. The project must be processed by the City Planning Committee, Public Works Committee, the HKL Board of Governors, and the City Board, before the City Council can make a decision. It is estimated that the building decision will be made by the Council during autumn 2016.





## Bridges

- Kruunuvuori Bridge 1,200 m
- Kruunuhaka-Nihti 600 m
- or Hakaniemi-Nihti 400 m
- Finke Bridge 300 m
- Total 2 km



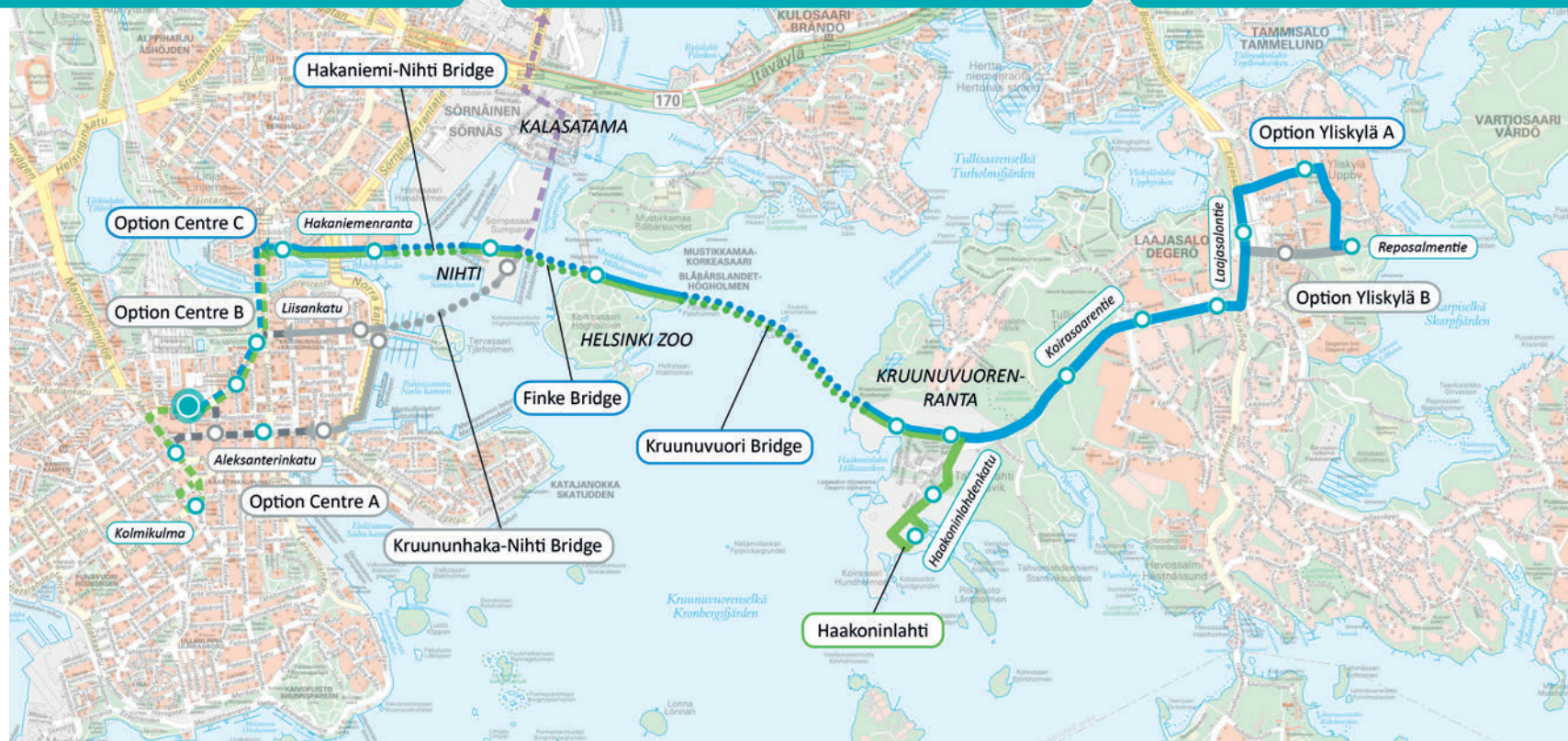
## Tram transport

- Length of tram line approx. 10 km, two new lines
- Interval 5–10 min.
- Travel time from the city centre to Kruunuvuorenranta 15 mins and from the city centre to Yliskylä 25 mins.
- Tram line users 37,000/day



## Cycling and walking

- Cycle path from the city centre to Laajasalo, connected to the cycling network
- Travel time by bike from the city centre to Kruunuvuorenranta 20 mins and from the city centre to Yliskylä 30 mins.
- Path users 3,000/day



General map 11.12.2015 / Sito Oy

- Stop
- Bridge connection
- Existing tram line
- Other researched line options
- City centre terminal point
- Street connection
- Kalasatama tram line

## Contact details

Project Director Ville Alajoki  
tel. +358 40 334 7301, ville.alajoki@hel.fi

[www.uuttahelsinkia.fi/kruunusillat](http://www.uuttahelsinkia.fi/kruunusillat)  
[www.facebook.com/kruunusillat](https://www.facebook.com/kruunusillat)