

A.D.I. URBTRANS

SONDAJ DE OPINIE PRIVIND TRANSPORTUL IN COMUN IN MUNICIPIUL PIATRA NEAMT

1. Ce mijloace de transport in comun preferati in municipiul Piatra Neamt?

1 – troleibuze

2 – autobuze

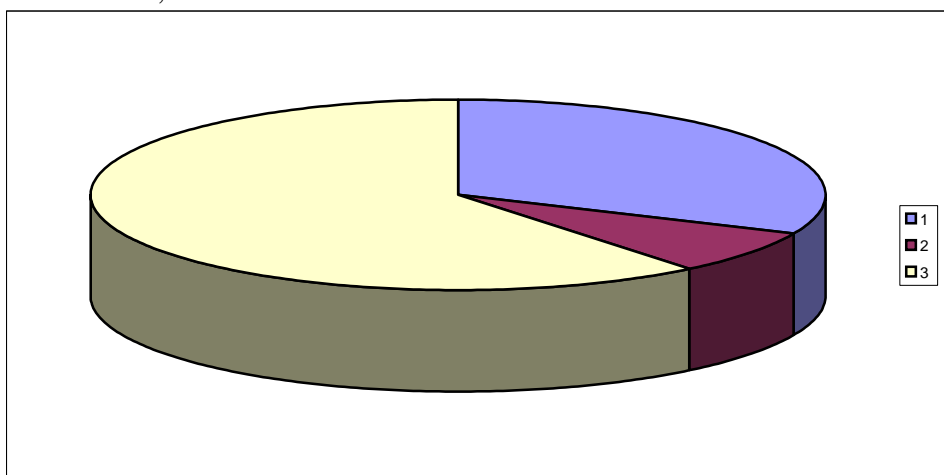
3 – microbuze

Total persoane 1.308 din care:

1 = 31,7 %

2 = 07,6 %

3 = 60,7 %

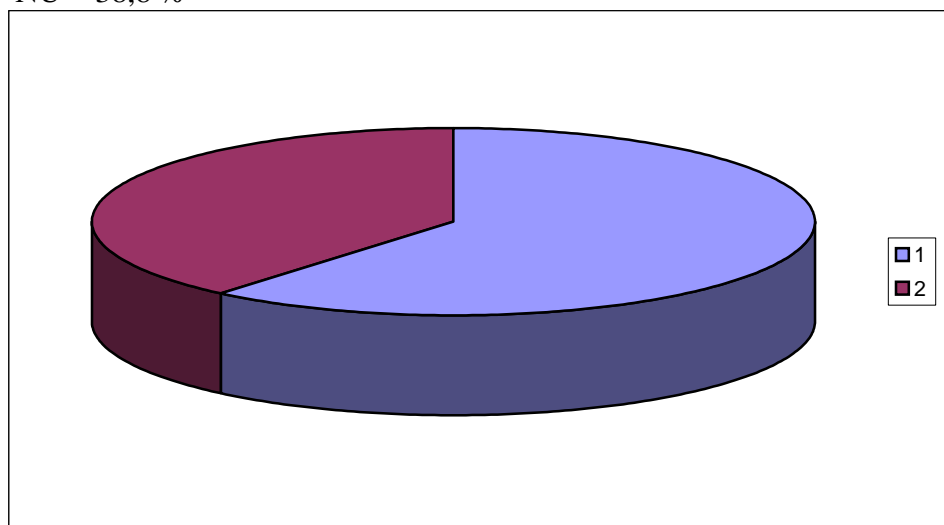


2. Traseele deservite de microbuze existente in prezent satisfac cerintele dumneavoastra?

Total persoane 1.177 din care:

DA = 61,2 %

NU = 38,8 %

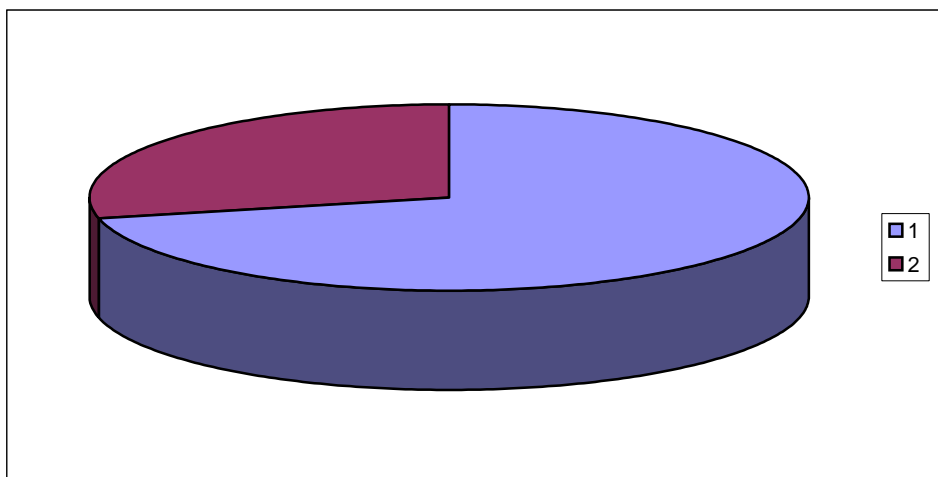


3. Este bine ca microbuzele sa circule pe liniile principale deservite de troleibuze?

Total persoane 1.183 din care:

DA = 71,4 %

NU = 28,6 %

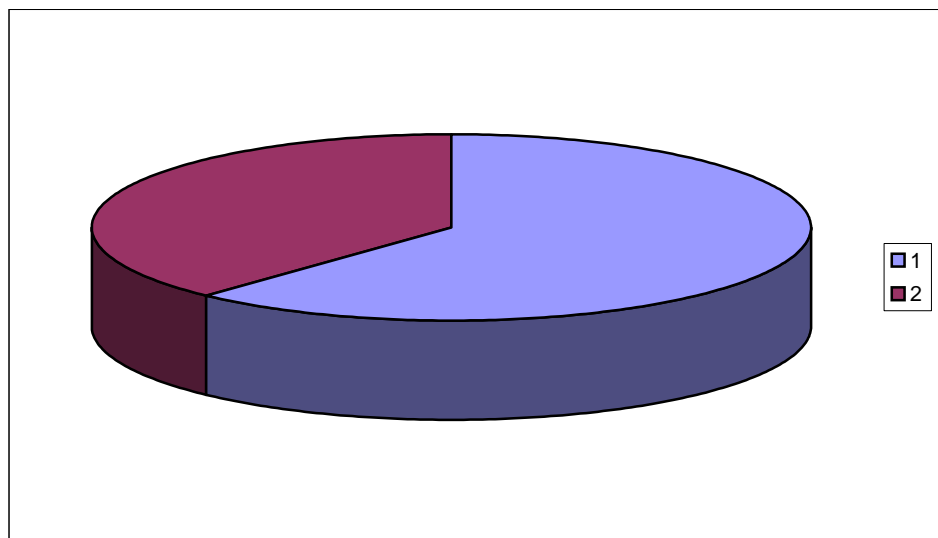


4. Sunteti multumit de actualul program de transport in comun efectuat cu troleibuze, autobuze si microbuze?

Total persoane 1.191 din care:

DA = 61,3 %

NU = 38,7 %



A.D.I.URBTRANS

SONDAJ DE OPINIE PRIVIND TRANSPORTUL IN COMUN IN MUNICIPIUL PIATRA NEAMT

1.Ce mijloace de transport in comun preferati in municipiul Piatra Neamt?

1 – troleibuze

2 – autobuze

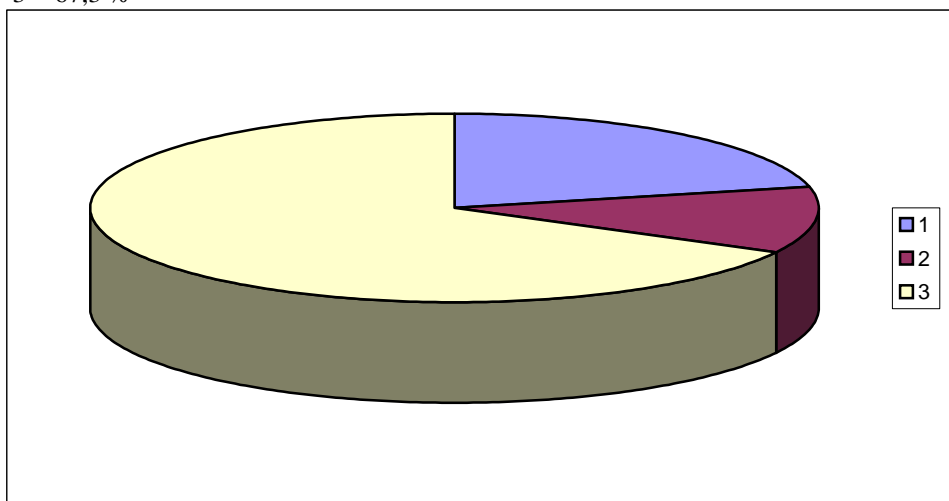
3 – microbuze

324 persoane intervievate intre limitele de varsta 10 -25 ani astfel:

1 = 21,3 %

2 = 11,4 %

3 = 67,3 %

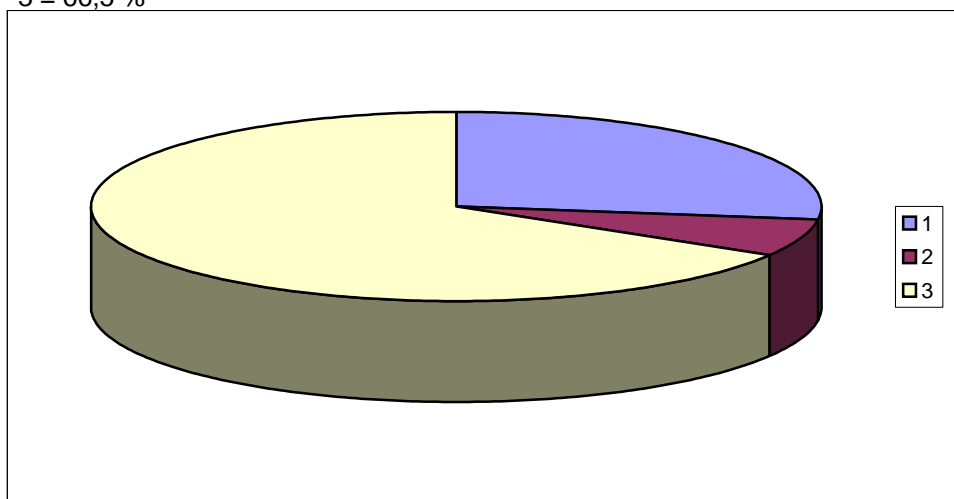


532 persoane intervievate intre limitele de varsta 26 - 50 ani astfel:

1 = 27,1 %

2 = 6,4 %

3 = 66,5 %

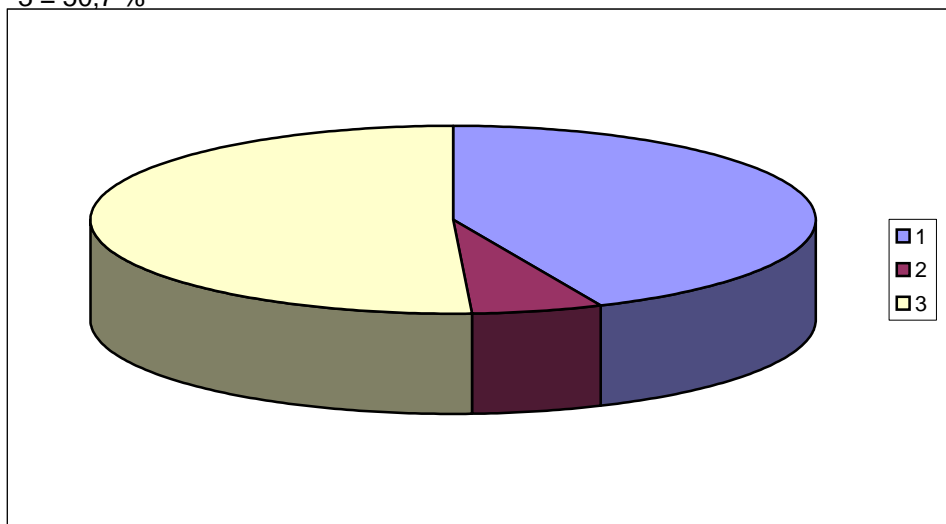


456 persoane intervievate intre limitele de varsta 51 - 80 ani astfel:

1 = 43,2 %

2 = 6,1 %

3 = 50,7 %



A.D.I.URBTRANS

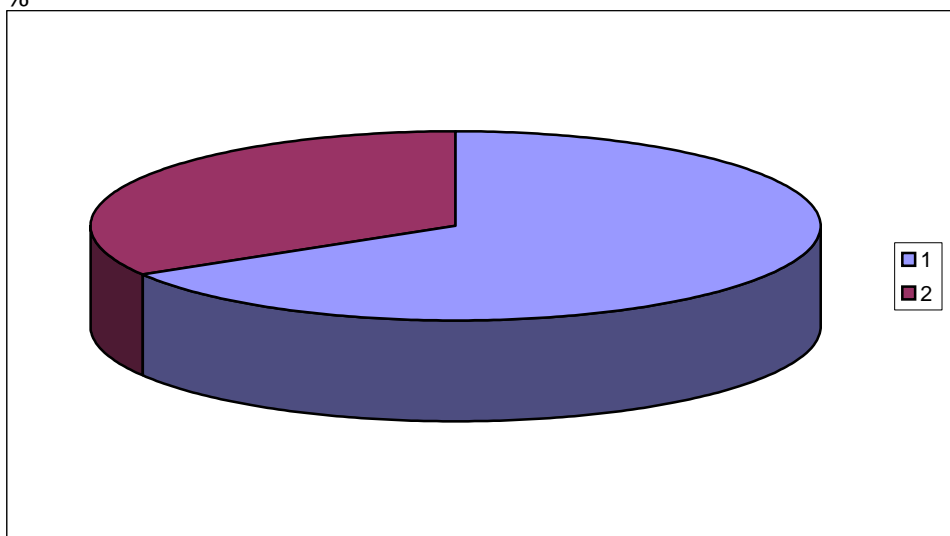
SONDAJ DE OPINIE PRIVIND TRANSPORTUL IN COMUN IN MUNICIPIUL PIATRA NEAMT

2. Traseele deservite de microbuze existente in prezent satisfac cerintele dumneavoastra?

303 persoane intervievate intre limitele de varsta 10 -25 ani astfel:

DA = 66,3 %

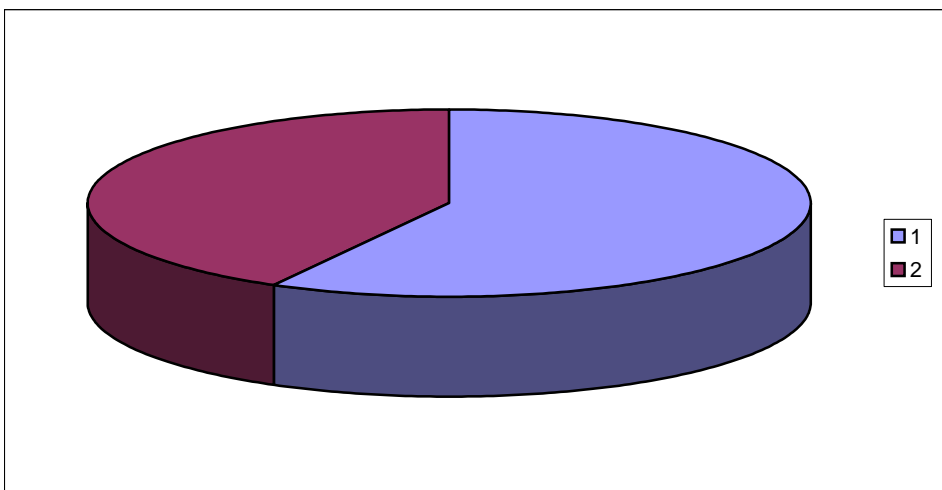
NU = 33,7 %



464 persoane intervievate intre limitele de varsta 26 - 50 ani astfel:

DA = 58 %

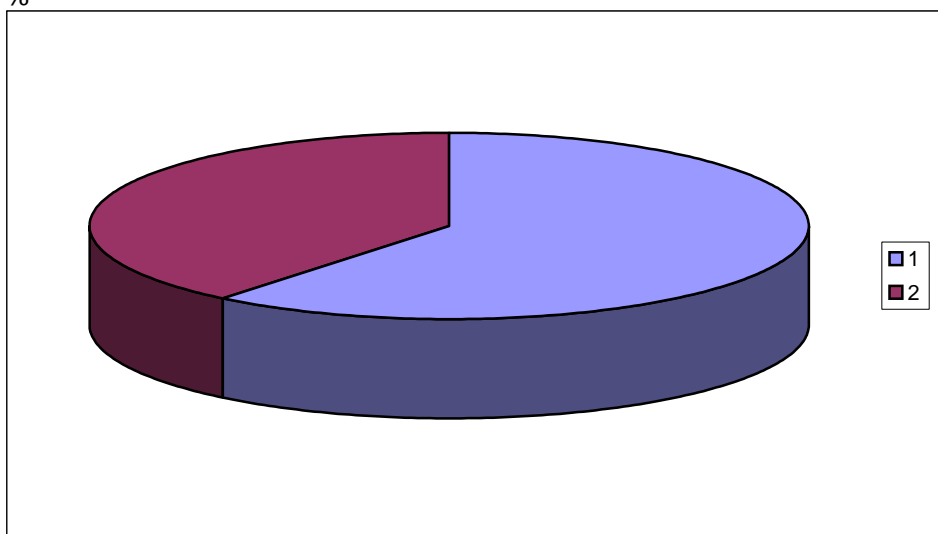
NU = 42 %



389 persoane intervievate intre limitele de varsta 51 - 80 ani astfel:

DA = 60,7 %

NU = 39,3 %



A.D.I.URBTRANS

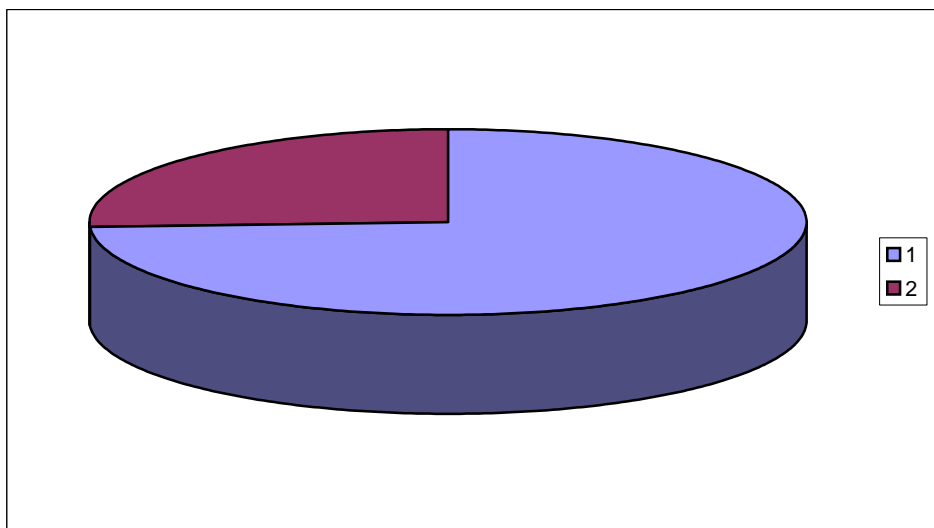
SONDAJ DE OPINIE PRIVIND TRANSPORTUL IN COMUN IN MUNICIPIUL PIATRA NEAMT

3. Este bine ca microbuzele sa circule pe liniile principale deservite de troleibuze?

309 persoane intervievate intre limitele de varsta 10 -25 ani astfel:

DA = 74,1 %

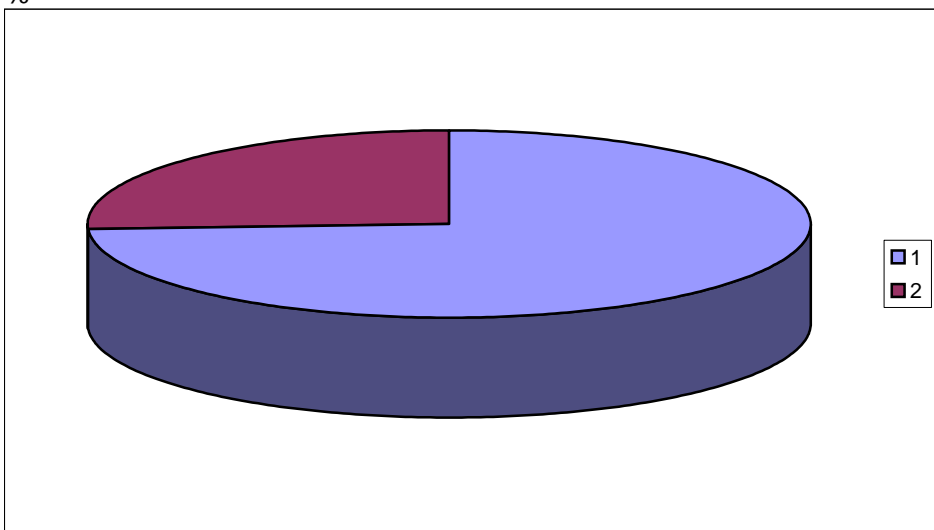
NU = 25,9 %



461 persoane intervievate intre limitele de varsta 26 - 50 ani astfel:

DA = 74,2 %

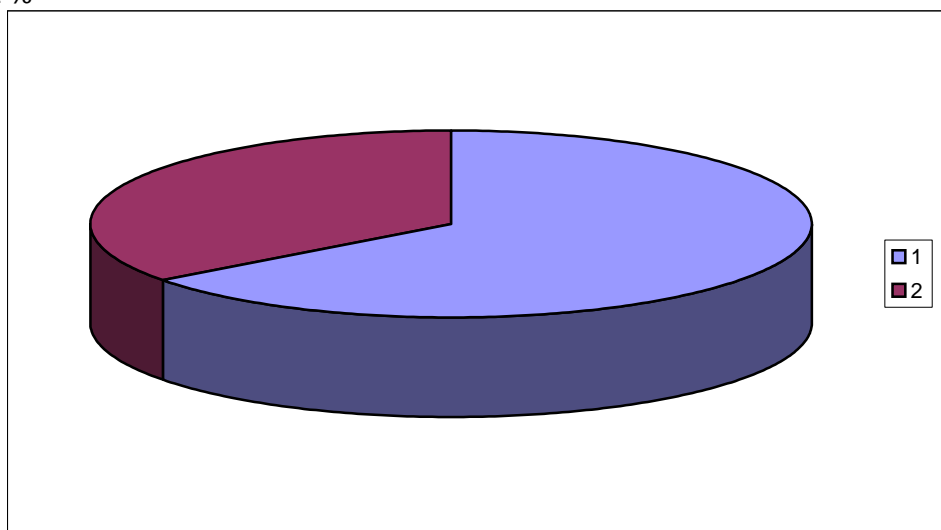
NU = 25,8 %



412 persoane intervievate intre limitele de varsta 51 - 80 ani astfel:

DA = 64,8 %

NU = 35,2 %



A.D.I.URBTRANS

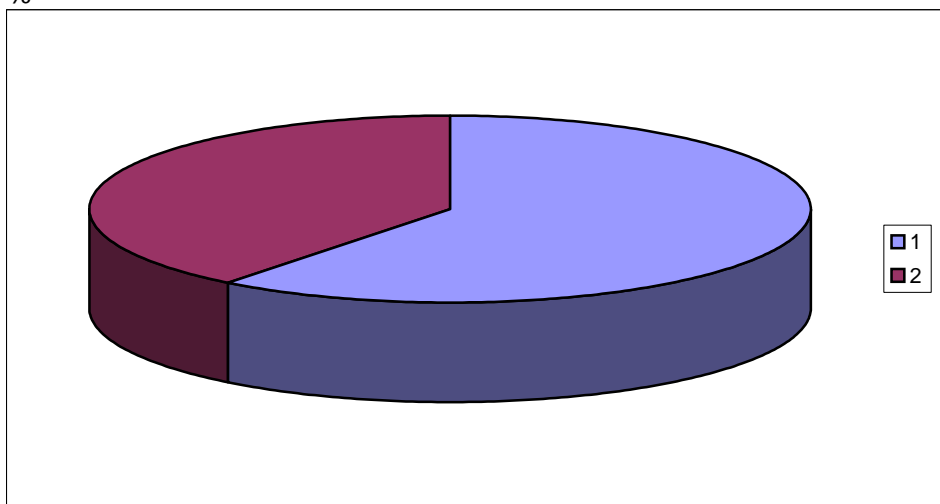
SONDAJ DE OPINIE PRIVIND TRANSPORTUL IN COMUN IN MUNICIPIUL PIATRA NEAMT

4. Sunteti multumit de actualul program de transport in comun efectuat cu troleibuze, autobuze si microbuze?

311 persoane intervievate intre limitele de varsta 10 - 25 ani astfel:

DA = 60,5 %

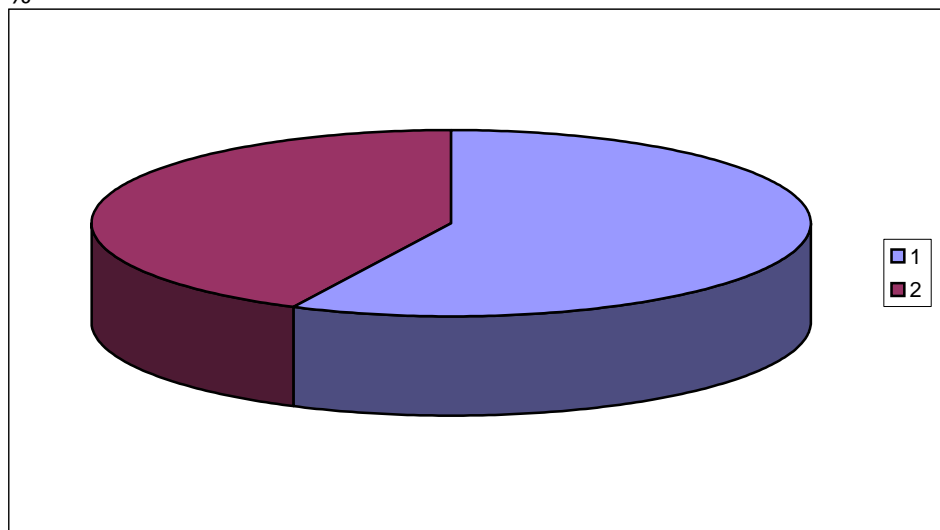
NU = 39,5 %



475 persoane intervievate intre limitele de varsta 26 - 50 ani astfel:

DA = 57,3 %

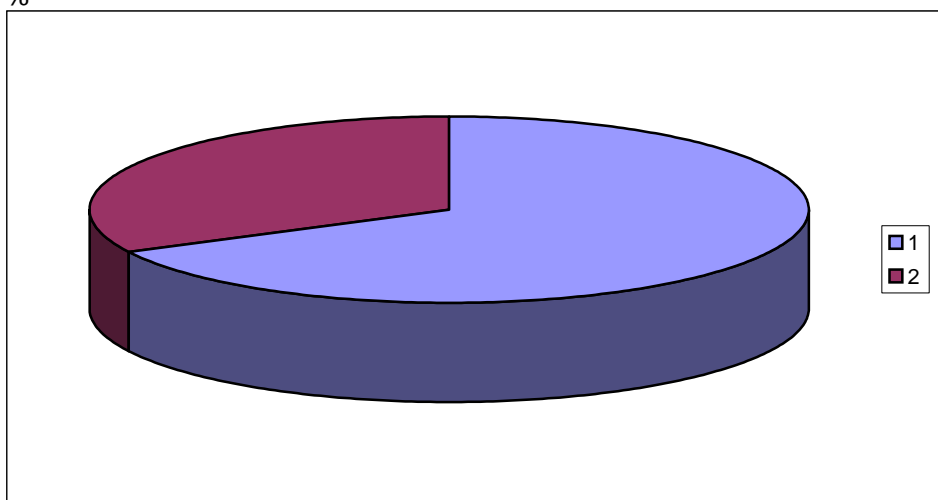
NU = 42,7 %



408 persoane intervievate intre limitele de varsta 51 - 80 ani astfel:

DA = 67,6 %

NU = 32,4 %



A.D.I.URBTRANS

SONDAJ DE OPINIE PRIVIND TRANSPORTUL IN COMUN IN MUNICIPIUL PIATRA NEAMT

1. Ce mijloace de transport in comun preferati in municipiul Piatra Neamt?

1 - troleibuze

2 - autobuze

3 - microbuze

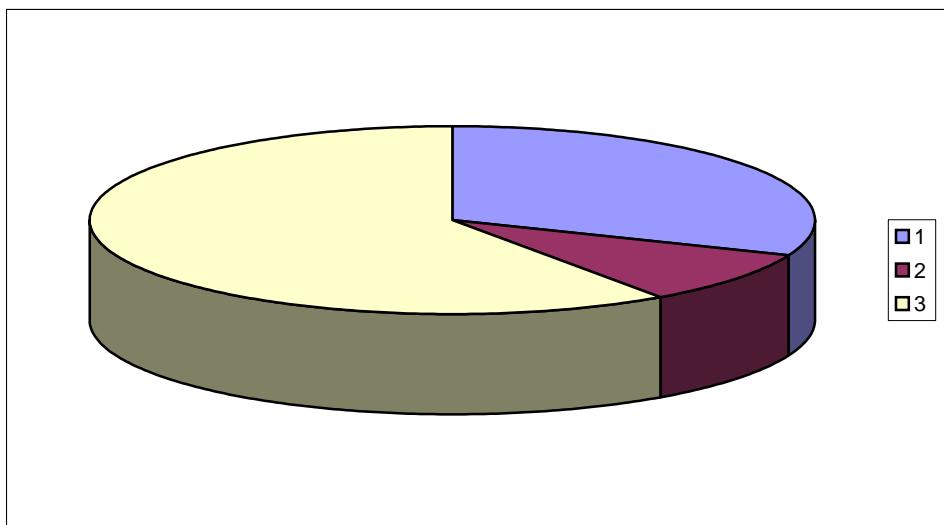
a) ZONA PRECISTA - CENTRU

TOTAL PERSOANE 391 DIN CARE:

1 = 31,2 %

2 = 9,2 %

3 = 59,6 %



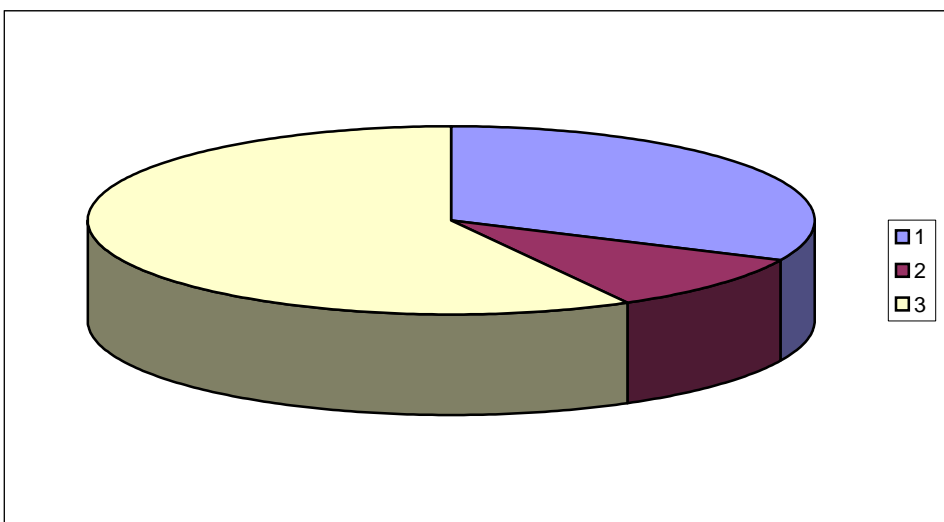
b) ZONA ORION

TOTAL PERSOANE 238 DIN CARE

1 = 31,9 %

2 = 10,1 %

3 = 58 %



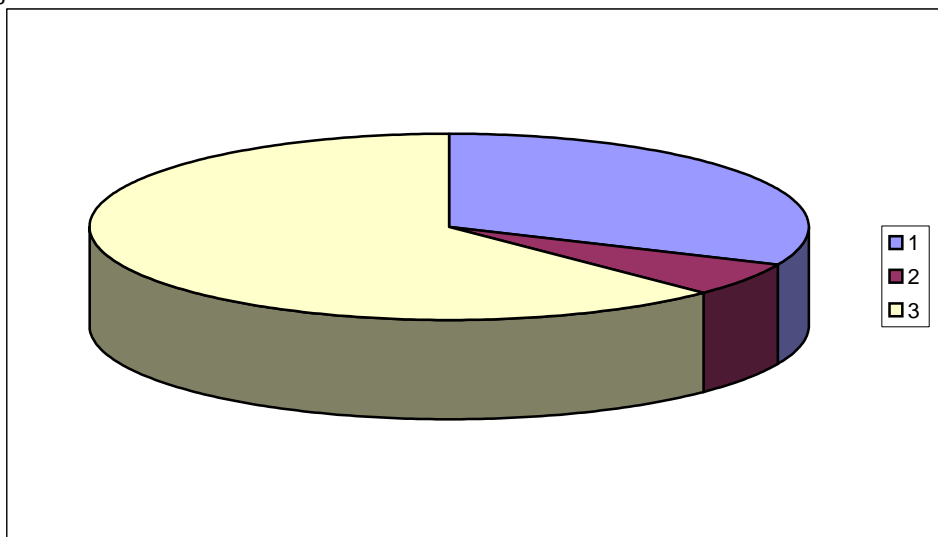
c) ZONA 1 MAI - SPITAL

TOTAL PERSOANE 679 DIN CARE:

1 = 31,8 %

2 = 5,7 %

3 = 62,5 %



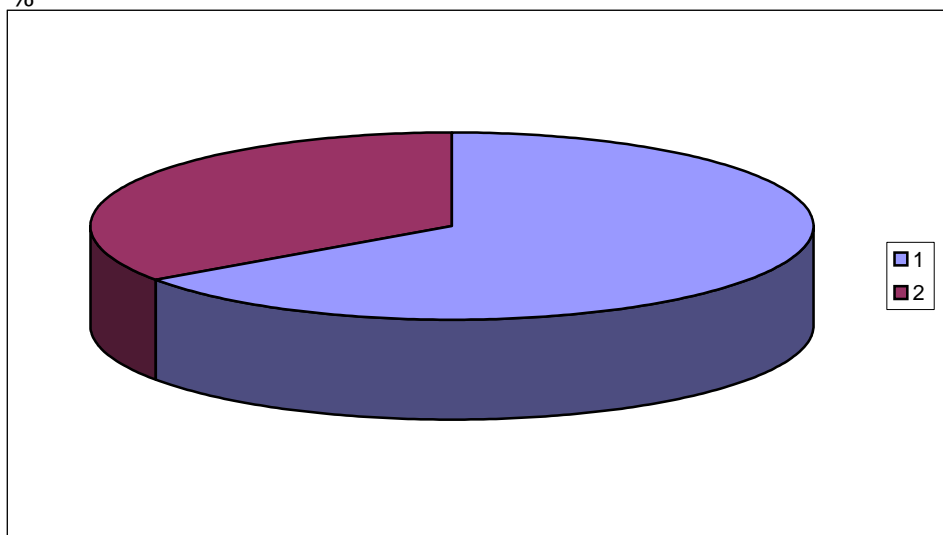
2. Traseele deservite de microbuze existente in prezent satsfac cerintele dumneavoastra?

a) ZONA PRECISTA - CENTRU

TOTAL PERSOANE 346 DIN CARE:

DA = 65,3 %

NU = 34,7 %

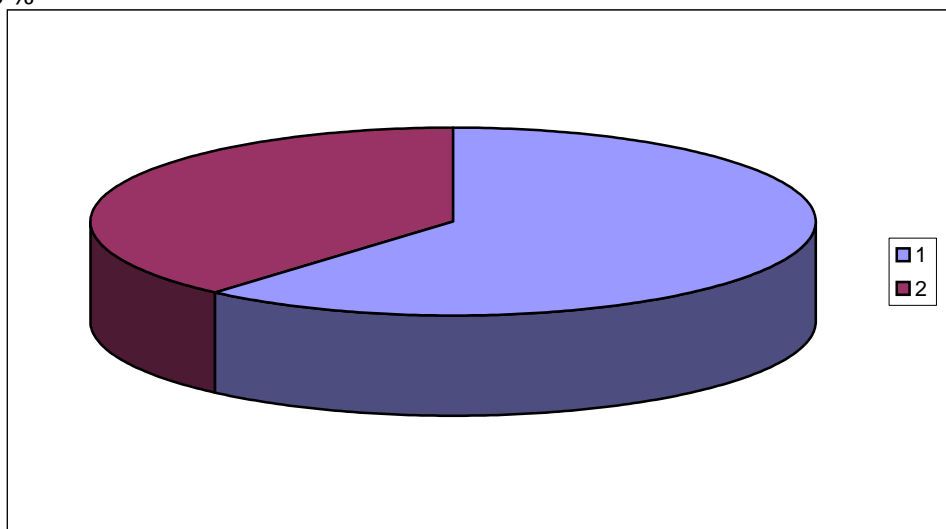


b) ZONA ORION

TOTAL PERSOANE 210 DIN CARE:

DA = 61,4 %

NU = 38,6 %

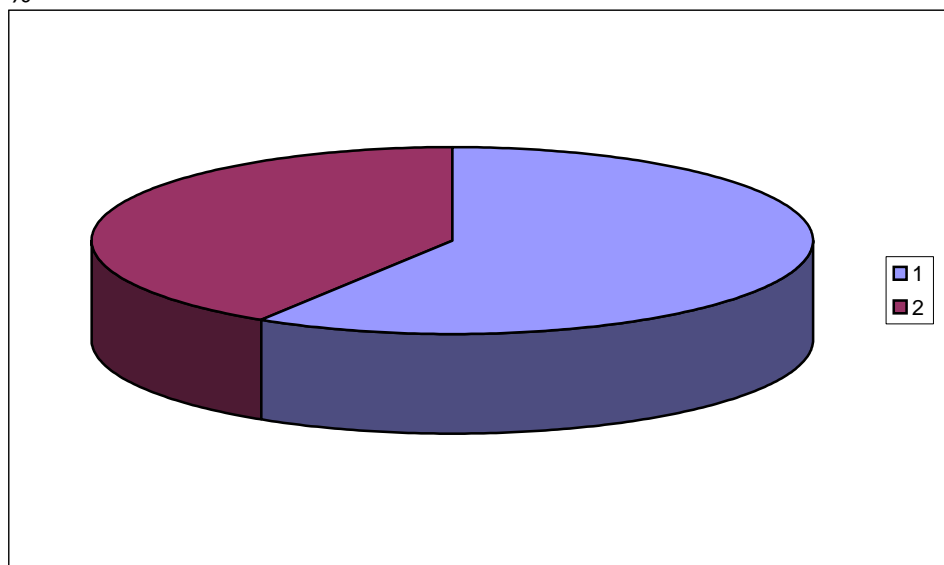


c) ZONA 1 MAI - SPITAL

TOTAL PERSOANE 621 DIN CARE:

DA = 58,8 %

NU = 41,2 %



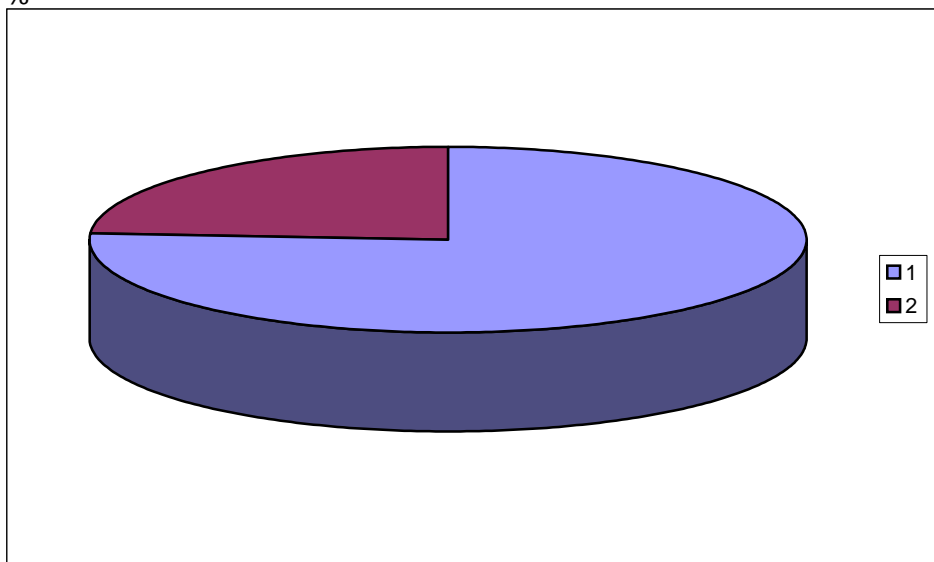
3. Este bine ca microbuzele sa circule pe liniile principale deservite de troleibuze?

a) ZONA PRECISTA - CENTRU

TOTAL PERSOANE 351 DIN CARE:

DA = 76,1 %

NU = 23,9 %

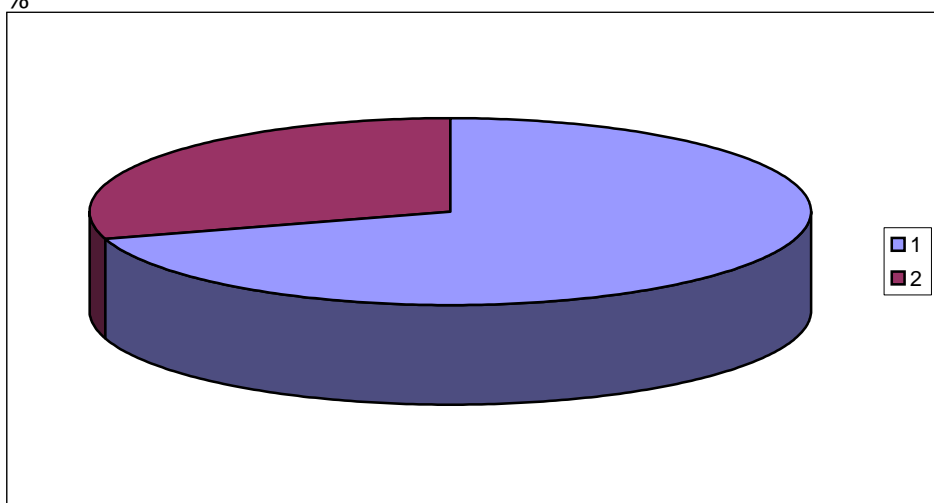


b) ZONA ORION

TOTAL PERSOANE 213 DIN CARE:

DA = 70,4 %

NU = 29,6 %

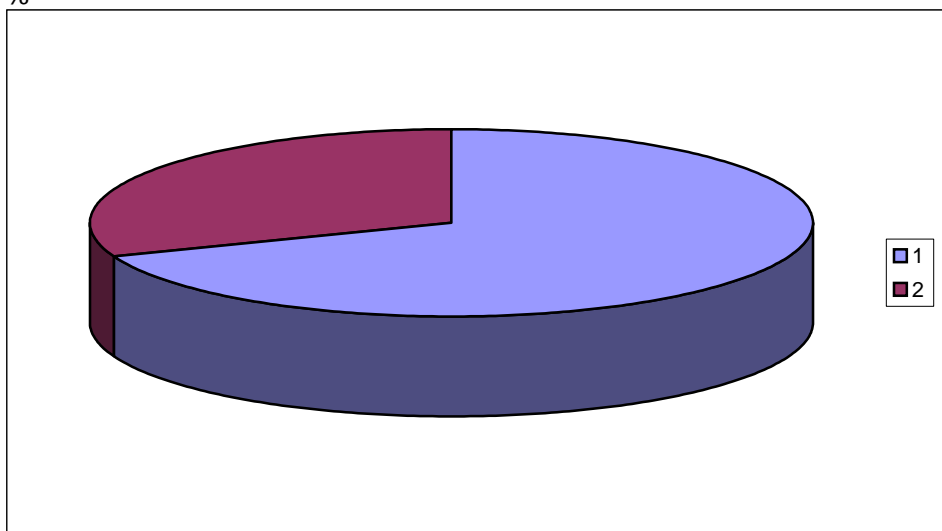


c) ZONA 1 MAI - SPITAL

TOTAL PERSOANE 619 DIN CARE:

DA = 69,1 %

NU = 30,9 %



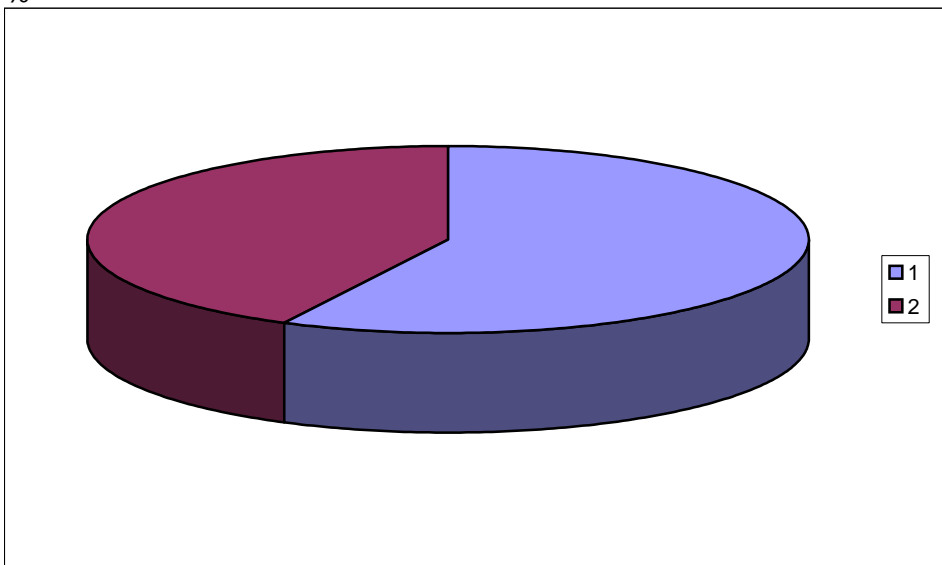
4. Sunteti multumit de actualul program de transport in comun efectuat cu troleibuze, autobuze si microbuze?

a) ZONA PRECISTA - CENTRU

TOTAL PERSOANE 347 DIN CARE:

DA = 57,6 %

NU = 42,4 %

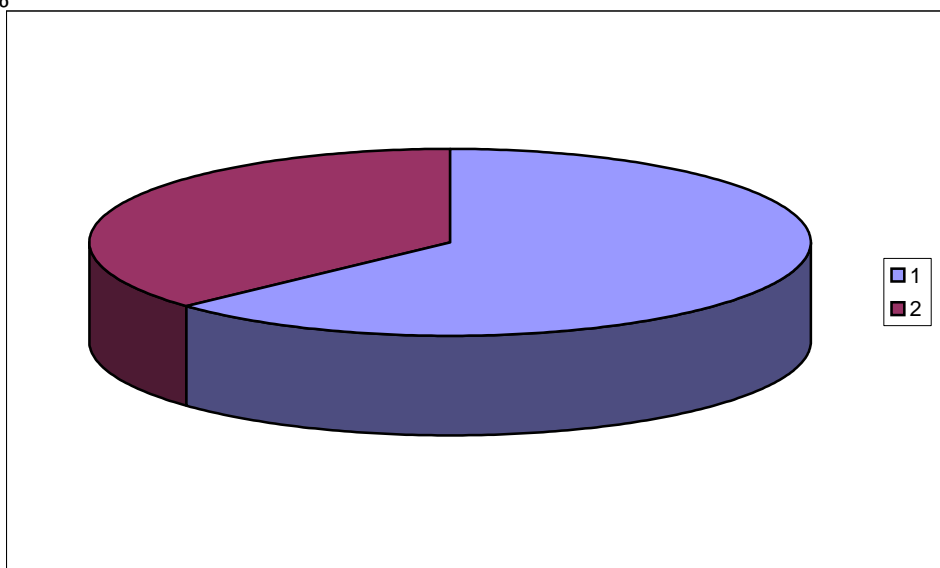


b) ZONA ORION

TOTAL PERSOANE 216 DIN CARE:

DA = 63 %

NU = 37 %



c) ZONA 1 MAI - SPITAL

TOTAL PERSOANE 628 DIN CARE:

DA = 62,7 %

NU = 37,3 %

