

Traffic Section City of Zurich



Guiding People



Stadt Zürich
Dienstabteilung Verkehr

1. Mobility
2. Organisation
3. Skills
4. Milestones
5. Projects

People want to be mobile

Being mobile in safety is of great value

All of us depend on mobility

Individual mobility needs individual solutions

Fulfilling different mobility needs is not easy

Balancing mobility is the Traffic Section's task 24/7

And - we are doing our job successfully



Facts, Politics and Law

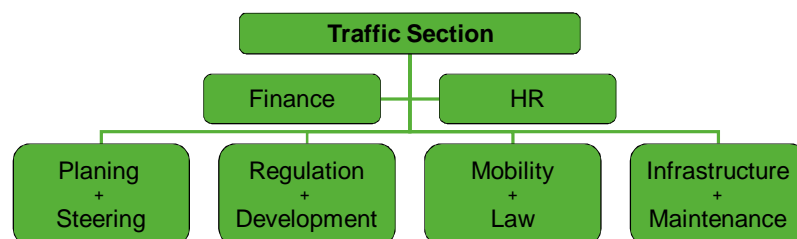
The development of traffic may not be left to chance. It must be influenced actively and anticipatory – based on facts and political and legal prerequisites on a national, regional and local level:

- demographic and social developments
- traffic policies and traffic law
- communal planning
- mobility strategy of the city of Zurich
- other political and legal areas

Organization



Traffic Section – Quadruple Expertise



Planing + Steering



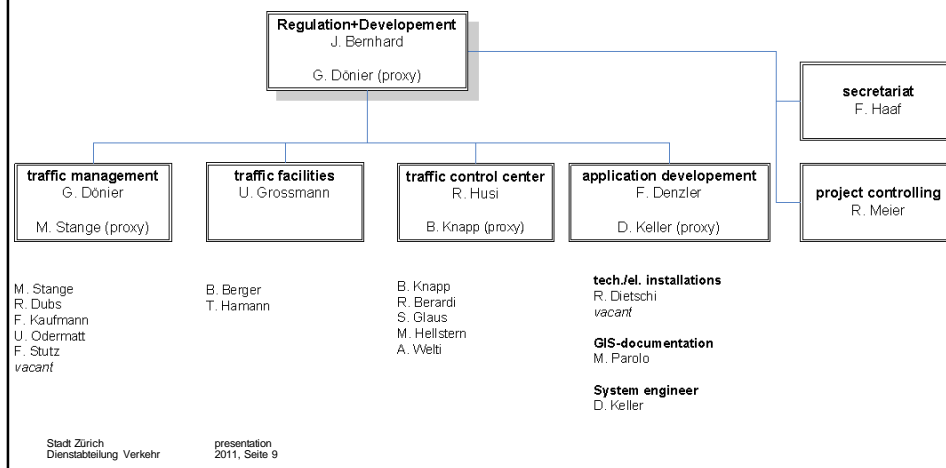
- Planning of traffic routings and project planning
- Regulating traffic flow during construction phases
- Directives based on traffic measures

Planing + Steering



- Coordinating traffic measures with other authorities (Building Department, Public Transport etc.)
- Processing and analysing relevant traffic data
- Management of traffic calming measures

Regulation + Development



Regulation + Development



- Designing, testing and introduction of programs for traffic control
- Project planning, placing into operation and service of approximately 400 traffic light signal systems in the city of Zurich

Regulation + Development



Priorities:

- Preferential treatment of public transport and slow moving traffic at traffic lights
- Priority for emergency services
- Optimizing traffic flow at building sites/road work by adjusting traffic light signal systems accordingly

Mobility + Law



- Authority for questions with regard to traffic law
- Analysis of mobility trends
- Generating traffic accident statistics and analysis
- Development of a traffic safety policy for the city of Zurich

Mobility + Law



- Issuing of permanent traffic directives
- Management of public parking spaces
- Authorizations www.parkkarten.ch

Infrastructure + Maintenance



- Implementing permanent and temporary traffic regulations
- Cleaning of signals

Infrastructure + Maintenance



- Closing off of municipal streets for huge events
- Repairing and maintenance of barriers and signals

Milestones of Success



- Exemplary traffic flow management
- City wide reduced speed zones (30 km/h)
- „Blue Zones“ with preferential parking for residents
- Limmatquai
- traffic-concept „EURO 2008“ (Letzigrund)
- etc.

Projects



- FLAMA West (accompanying measures of bypass West)
- Hardbrücke
- Langstrasse
- Glattalbahn
- Adaptive traffic flow management
- etc.