

Welcome to Zurich Public Transport

COST Meeting Zurich

Susanne Reumüller, Planning Department



Ein Unternehmen
der Stadt Zürich



Umsteigen lohnt sich.

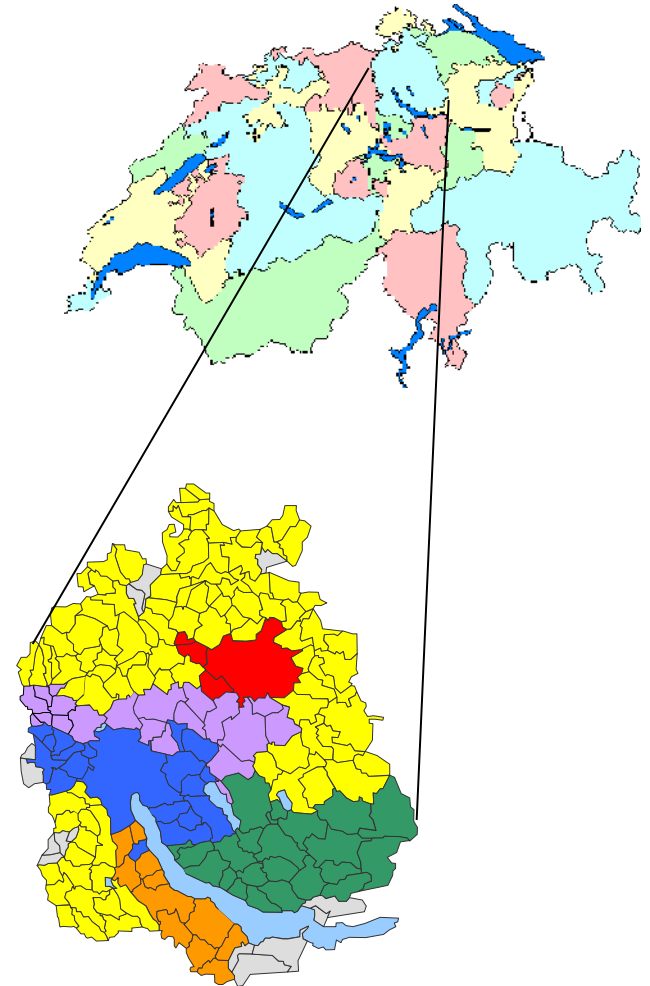
Contents

- **General information**
- **Zurich Model**
- **High quality of Public Transport**

General Information

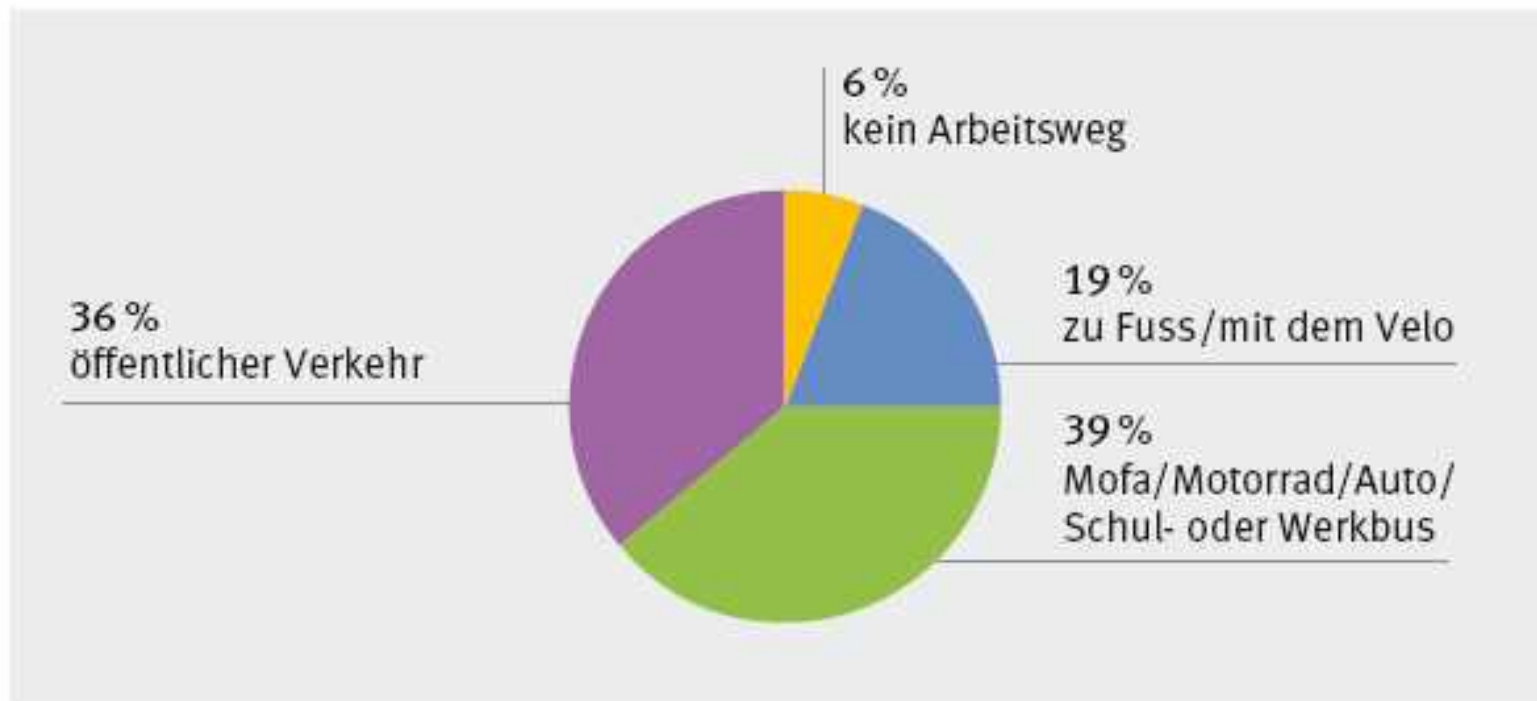
Where we are

- Switzerland
 - 41'285 sqkm
 - 7.8 million inhabitants
- Canton Zürich
 - 171 communities
 - 1.37 million inhabitants
 - 43 public transport operators
 - 1.4 million public transport commuters
- City of Zurich
 - Elevation 408 m
 - 91.88 sqkm
 - 372'000 inhabitants
 - 39 cars per 100 inhabitants



Canton of Zurich

Verkehrsmittelwahl der Pendlerinnen und Pendler



Basis: 941'811 Erwerbstätige und Schüler/Studenten **mit Arbeitsort** im Kanton Zürich

Quelle: Bundesamt für Statistik, eidg. Volkszählung 2000

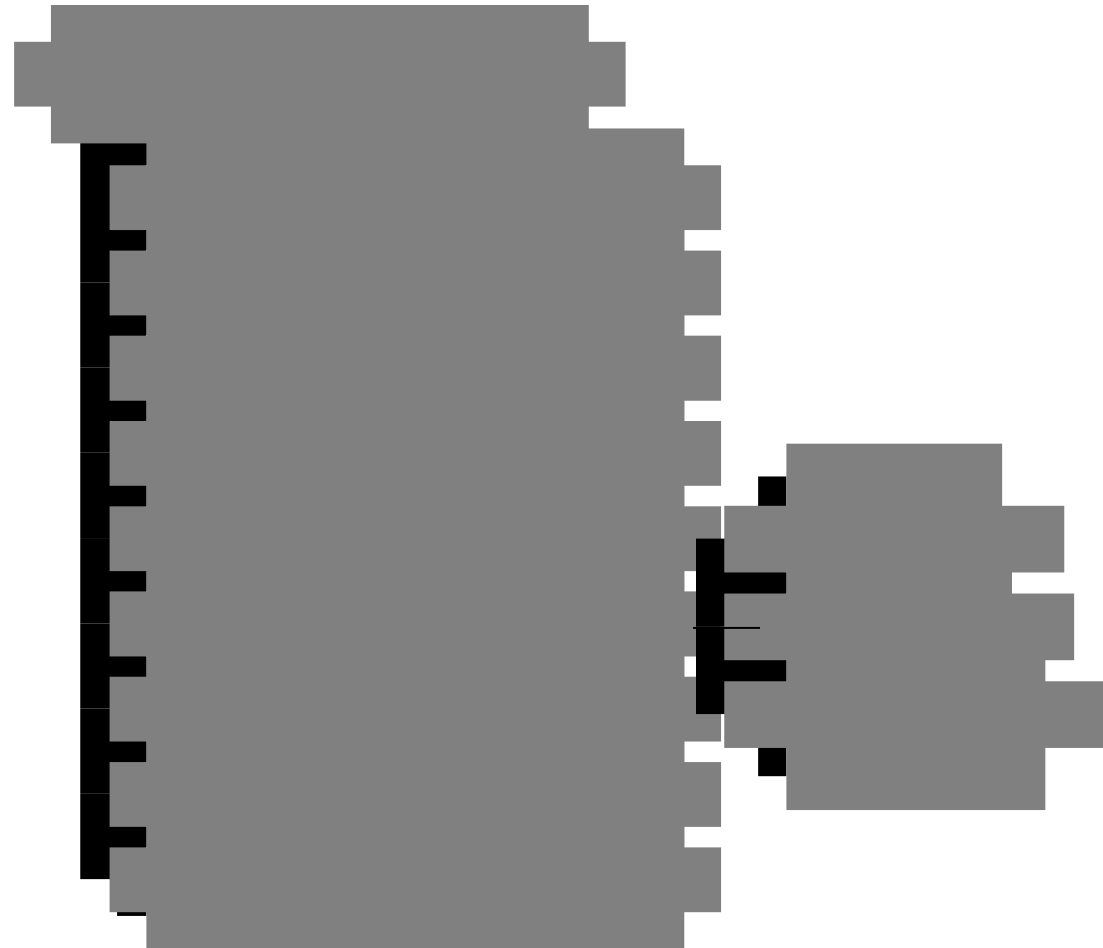
Facts and figures about VBZ



- 13 tram lines
- 6 trolley bus lines
- 15 bus lines in the City
- 36 bus lines in the outskirts
- 9 mini bus lines
- 1 funicular
- 330 trams – 166 km rail
- 242 buses
- 500 km traffic routes (tram & bus)

- 2400 employees
- 467 Mio. CHF costs/benefits
- 365 x 20 service hours
plus night bus services Fr/Sat,
Sat/Sun
- 840'000 passengers daily
- 1.6 million Pkm / day
- Each day our vehicles cover a
distance of twice around the
globe

VBZ are part of the City administration

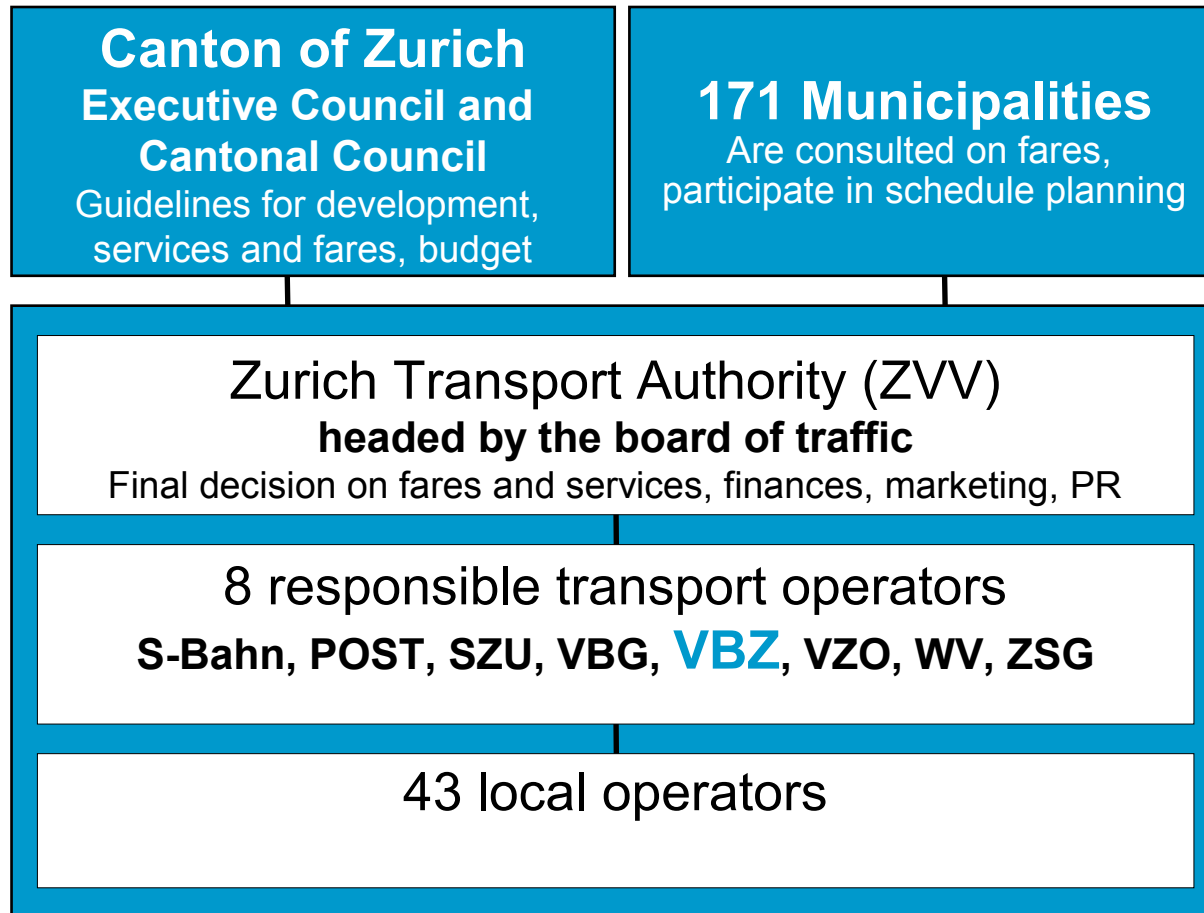


VBZ as part of ZVV

- 1 transportation authority since 1990 (Zürcher Verkehrsverbund)
- Tasks are regulated in the Law on Passenger Traffic (PVG)
- VBZ = Leadhouse
- 8 transportation companies with responsibility for marketing (MVU)
- 11 other transportation operators
- zone-based fare system



Organisation of public transport throughout the Canton of Zurich



Zurich Model



Ein Unternehmen
der Stadt Zürich



Umsteigen lohnt sich.

History – Zurich Model

- 1882 Opening of the first so called „Rösslitrām“ – horse-drawn tram
- 1894 first electric tram starts rolling
- 1927/39 first bus service / trolley bus service
- 1955/57 first articulated bus / trolley bus
- 1962 project of moving many tram lines into tunnels was rejected in a referendum
- 1971 implementation of control center
- 1973 project to create an underground railway was rejected
- **1977 popular initiative for public transport promotion**
- 1990 Zurich Transport Authority (ZVV)
- 2007 first double-articulated-trolley-bus

40 years ago



Pictures from the report „Der Weg zum attraktiven Nahverkehr“, August 1974



VBZ

Züri  Linie

We bring everybody faster and
more comfortable through the
city traffic

High quality of public transport



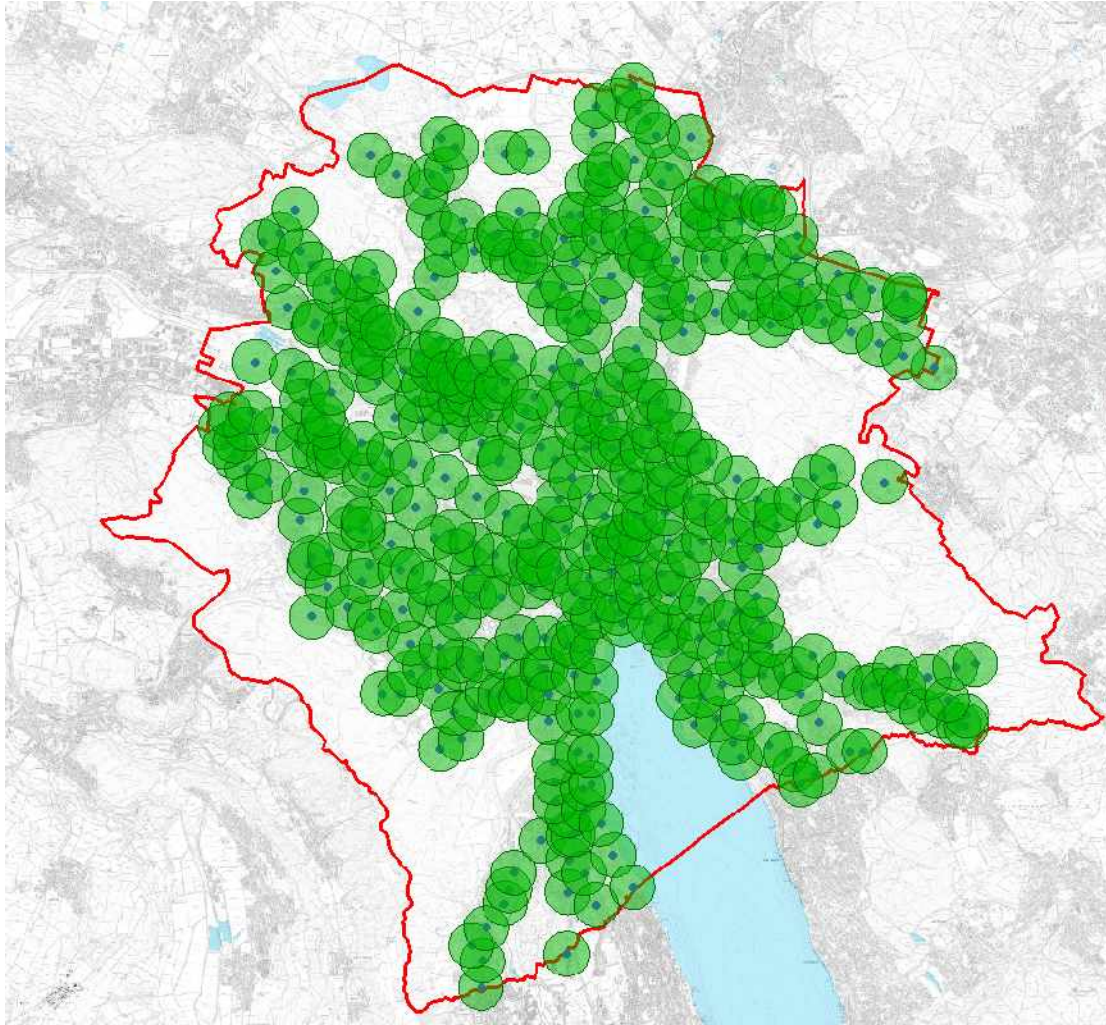
Ein Unternehmen
der Stadt Zürich



Umsteigen lohnt sich.

High quality of coverage

High density of bus/tram stops

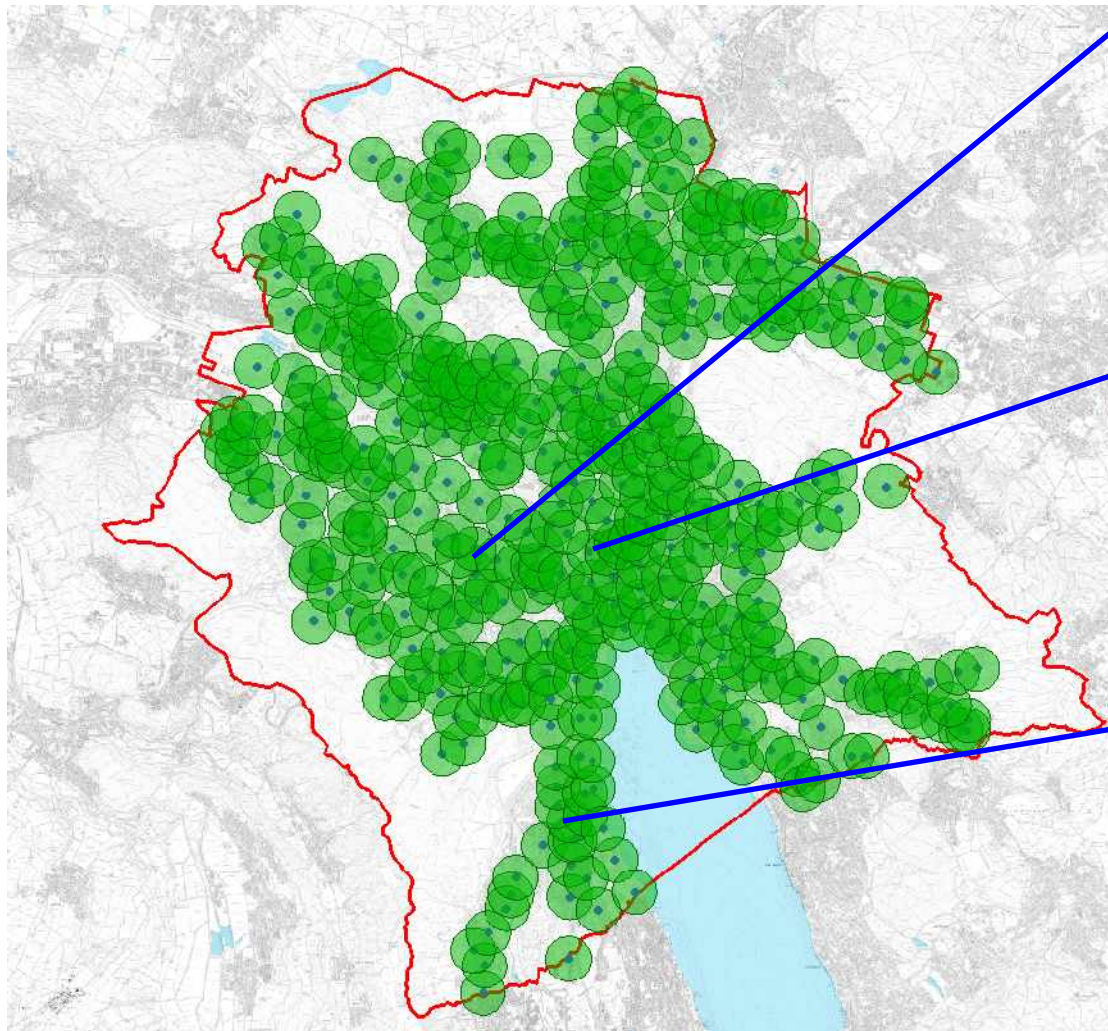


- Quality standard: everybody should reach the next bus/tram stop within the next 300m



Fortunately there is a bus/tram stop every 300 metres.

Dense Timetable



Albisriederplatz → City Center

10:00h	2	10:11h	3	10:22h	2
10:01h	72	10:12h	33	10:23h	72
10:03h	3	10:15h	2	10:26h	3
10:05h	33	10:17h	33	10:27h	33
10:07h	2	10:18h	3	10:30h	2
10:08h	72	10:20h	33		

1-2 min

Rennweg → Central Station

10:01h	7	10:12h	13	10:23h	7
10:03h	6	10:14h	11	10:26h	6
10:04h	13	10:15h	7	10:27h	13
10:06h	11	10:16h	13	10:29h	11
10:08h	7	10:19h	13		
10:11h	6	10:21h	11		

1-2 min

Morgental (→ City Center)

10:01h	7	10:24	7
10:03h	33	10:26	33
10:09h	7		
10:11h	3		
10:16h	7		
10:18h	33		

2-6 min

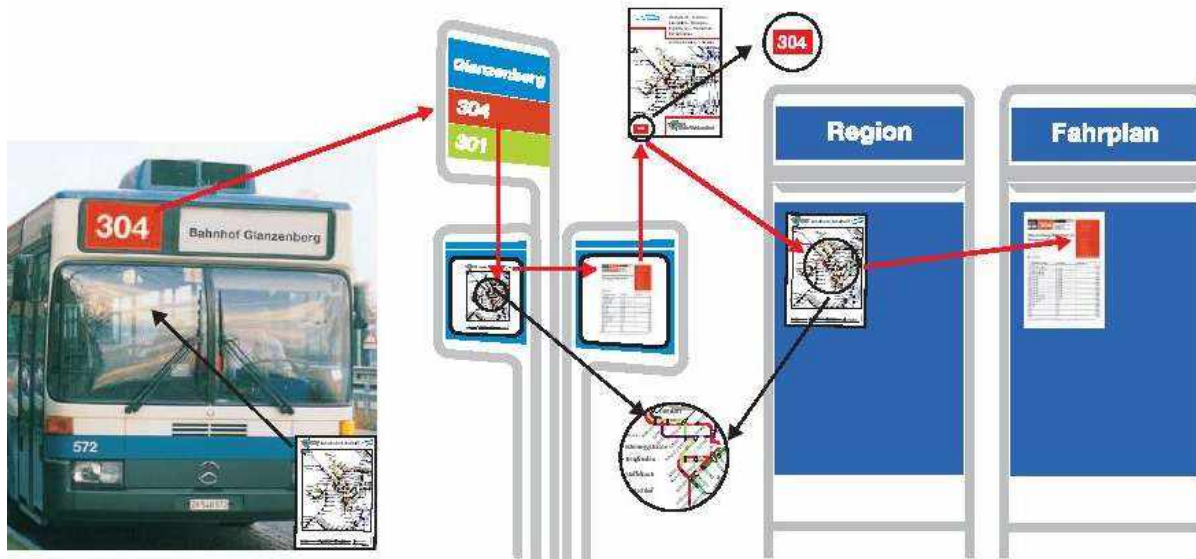


We have the closest timetable of Europe.
Sorry, dear tourists



Not every inhabitant is happy about the
dense timetable

Communication/Information



Fahrplan Schweiz + Tür-zu-Tür im Kanton Zürich

Von:

Nach:

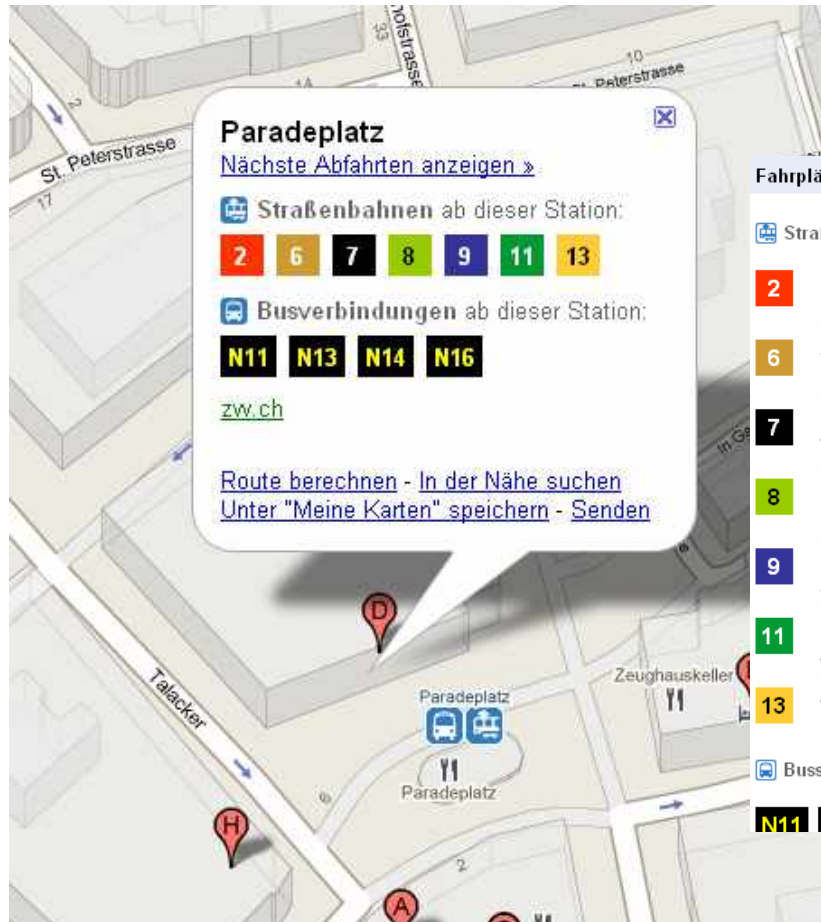
Via(1):

Datum:

Uhrzeit: ☒ Abfahrt ☐ Ankunft



Google maps



Fahrpläne

Straßenbahnen ab dieser Station:

2	Bahnhof Tiefenbrunnen	16:40	16:48	16:55	17:03	17:10	...	00:26
	Farbhof	16:43	16:51	16:58	17:06	17:13	...	00:30
6	Zoo	16:41	16:49	16:56	17:04	17:11	...	18:34
	Bahnhof Enge	16:47	16:54	17:02	17:09	17:17	...	18:24
7	Bahnhof Stettbach	16:44	16:52	16:59	17:07	17:14	...	00:24
	Wollishofen	16:46	16:53	17:01	17:08	17:16	...	00:40
8	Klusplatz	16:40	16:48	16:55	17:03	17:10	...	20:30
	Hardplatz	16:44	16:51	16:59	17:06	17:14	...	00:18
9	Hirzenbach	16:44	16:51	16:59	17:06	17:14	...	00:20
	Zürich, Triemli	16:47	16:54	17:02	17:09	17:17	...	18:54
11	Rehalp	16:41	16:49	16:56	17:04	17:11	...	00:36
	Auzelg	16:42	16:49	16:57	17:04	17:12	...	00:25
13	Albisgütli	16:43	16:50	16:58	17:05	17:13	...	00:29
	Frankental	16:46	16:54	17:01	17:09	17:16	...	00:25

Busse von nahegelegenen Haltestellen:

N11 N13 N14 N16



Mobile Information



Bus/tram stops

- direct, attractive accessibility
- accessible for handicapped people
- informative
- pleasant (Meeting Point)
- secure
- clean



Questions?



To rent – Intelligent creatures change
in Zurich for public transport