

Promoting **clean** public transport

# Trolley

## TROLLEY

### What was achieved in Brno

Miluse Pokorna  
City of Brno

TROLLEY Final Conference

map by © (2010) data2map.at

- ▶ Brno is an administrative and cultural centre of the **South Moravian** Region and the second largest city of the Czech Republic.
- ▶ First trolleybus line was successfully started in June 1949. Now:
- ▶ Served area by PT 388 km<sup>2</sup>
- ▶ No. of trolleybus lines 13
- ▶ Length of trolleybus lines 108 km
- ▶ Transported No. of passengers 42 718 274
- ▶ No. of vehicles 147

- ▶ **Reason for interest** – Brno was among first cities with Trolleybus transport in Czech Republic and Trolleybus network in Brno is the biggest in whole Czech Republic.
- ▶ **Main aims:**
  - ▶ Extension of trolleybus lines
  - ▶ Improve awareness of trolleybuses
  - ▶ Compile intermodal compendium





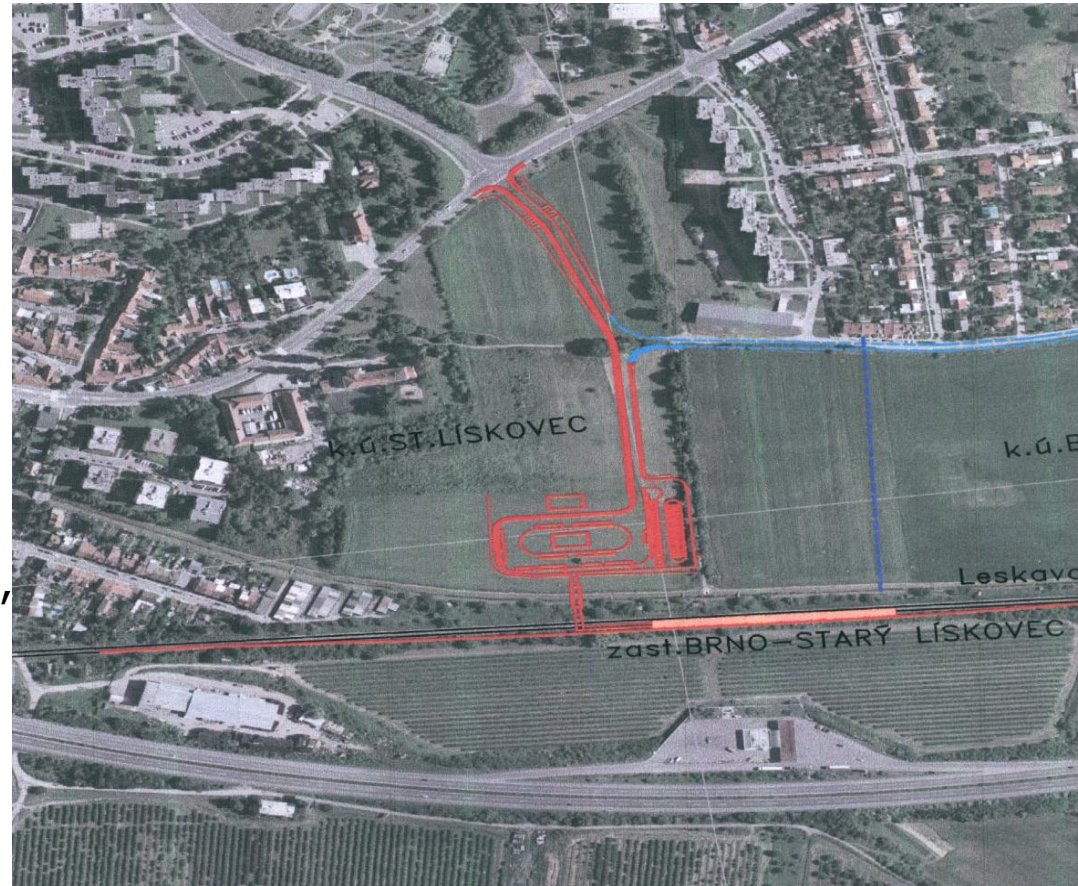
# Pilot Action I

## ► Brno – Starý Lískovec

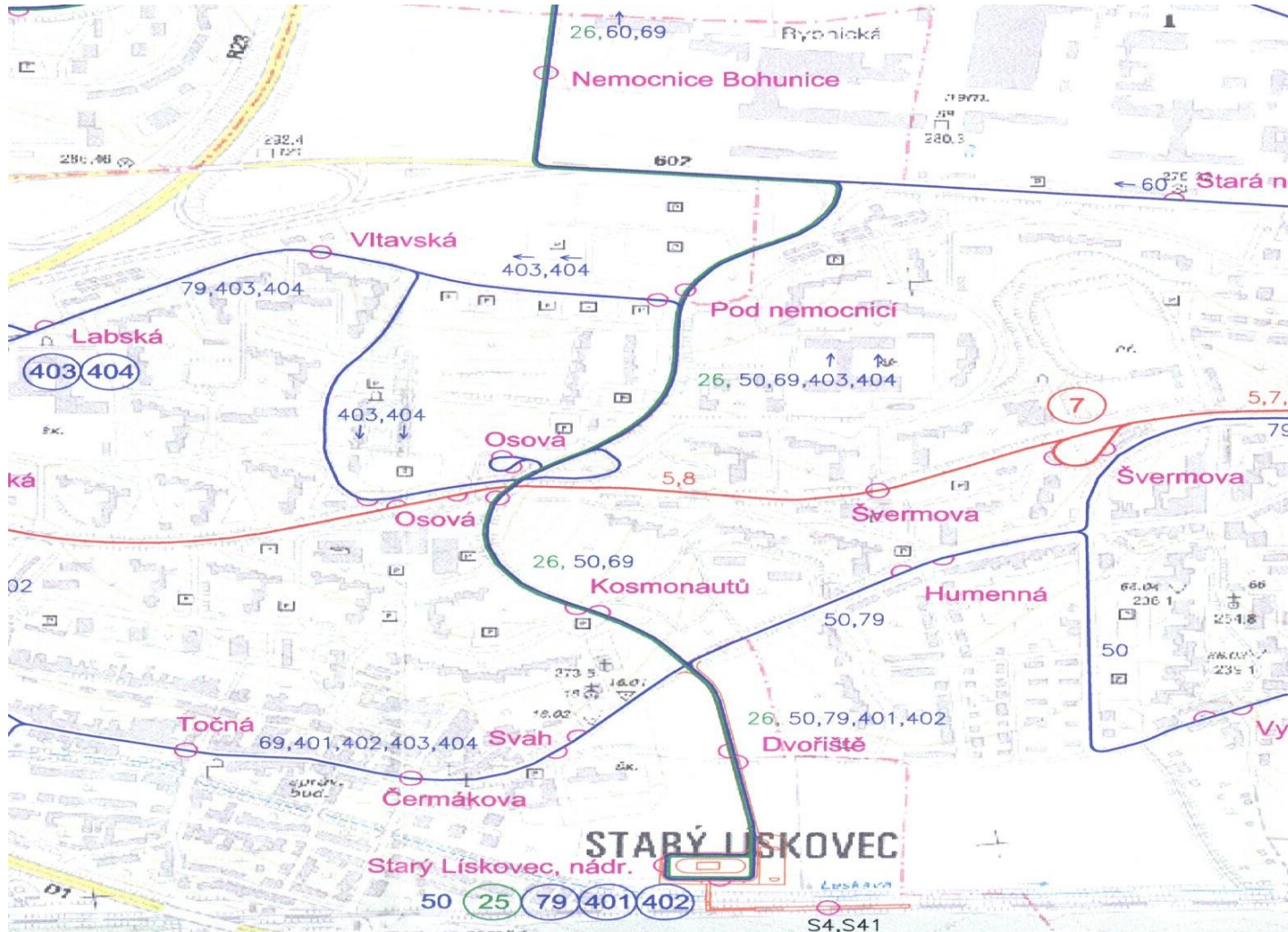
- Documentation for planning permission
- Documentation for building permission

## ► Results

- Placement of substation analysis, energetic calculation, noise level study, study of dispersion, biological study, geological survey.



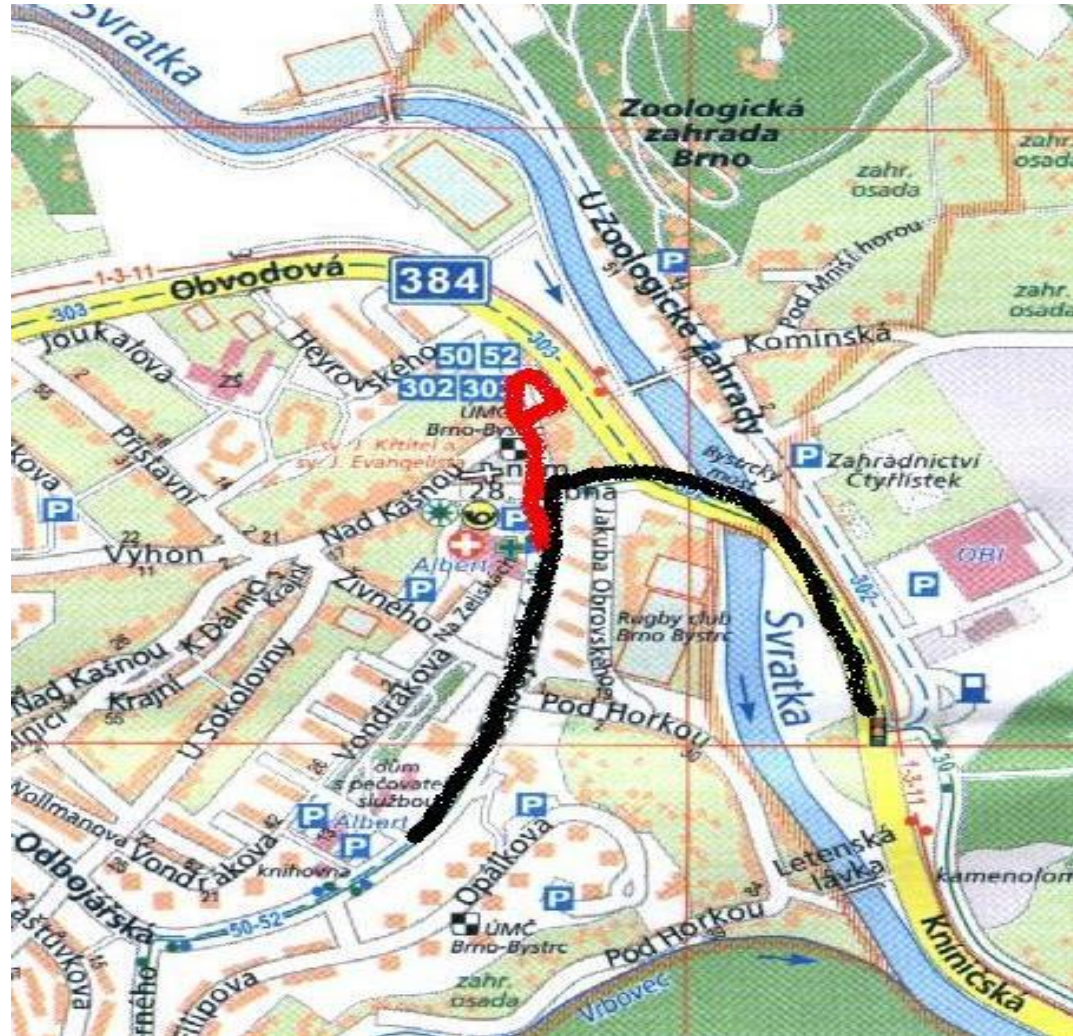
# Pilot Action I





# Pilot Action II

- **Brno – ZOO**
  - Documentation for planning permission
  - Documentation for building permission
- **Results**
  - Sound level measurement, public lighting study, technical specification, application for planning permission and building permission.



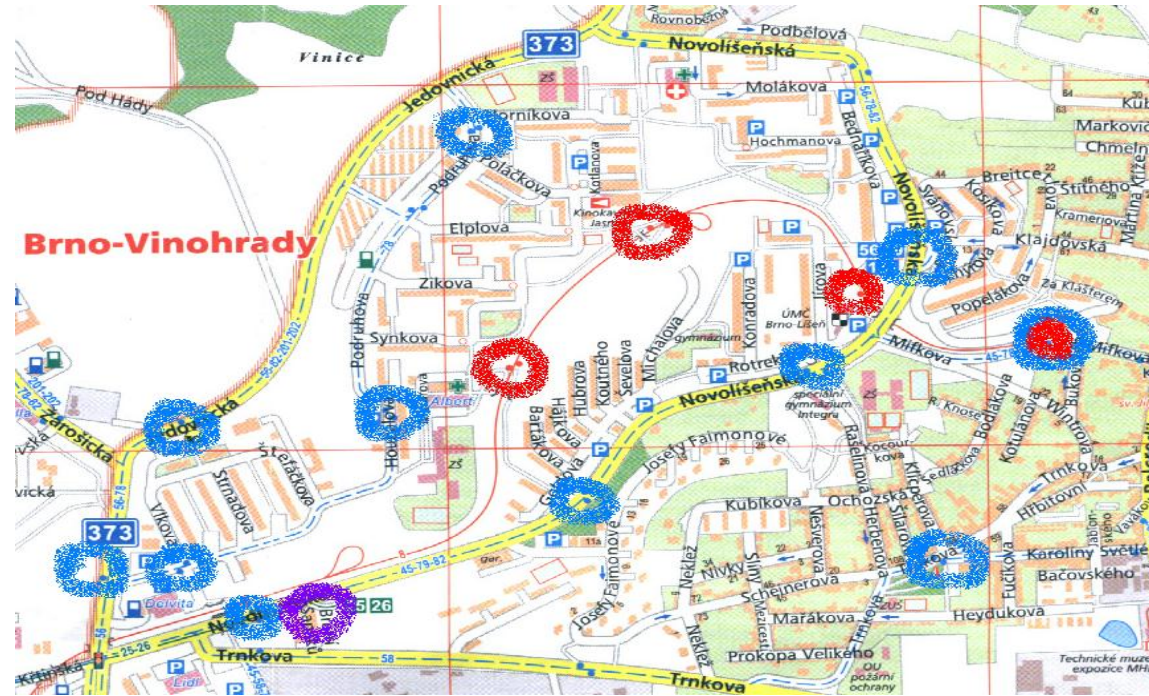
# Pilot Action III

## ► Brno – Líšeň

- Feasibility study

## ► Results

- Operational-economic comparison (cost-benefit analysis) of trolleybus and diesel bus services in the respective area
- Assessment of catenary system and traction overhead layout
- Assessment of traction overhead positioning and utilisation of public lightning poles for traction overhead
- Draft proposal of the updated public transport routing in the respective area





## ► **Intermodal Compendium**

## ► **Results**

- One completed compendium in english language in electronic form with examples of
  - Intermodal transport in Brno
  - Intermodal transport in Szeged
  - Intermodal transport in Gdansk

# What has changed in Brno through TROLLEY

- ▶ Documentation necessary for building new trolleybus line from planned train station in Stary Liskovec to campus Bohunice is done.
- ▶ Awareness have been increased by organizing different events (ETD, competition, conferences and so on)

# How can others benefit?

- ▶ Compendium of intermodal transport will be useful for other trolleybus cities
  
- ▶ Dissemination of results
  - ▶ Regular Trolleybus Days
  - ▶ Photo competitions
  - ▶ Seminar in Brno (2011)
  - ▶ e-bus Conference in Prague (2012)
  - ▶ Czech Raildays Ostrava (2012)
  - ▶ CzechBus Prague (2012)
  - ▶ Urban Transport Conference La Coruña (2012)





# What is the way forward after TROLLEY in ...

- ▶ Follow-up activities
  - ▶ Building of new trolleybus line (Starý Lískovec)
  - ▶ Extension of trolleybus line (ZOO)
  - ▶ Promoting trolleybuses by maintaining European Trolleybus Day
- ▶ Trolley project has and will have big influence to urban mobility planning, for example there will be improvement of transport to Bohunice campus where around 40 thousand people are studying and working





# Thank you for your attention!

Miluse Pokorna  
City of Brno  
[pokorna.miluse@brno.cz](mailto:pokorna.miluse@brno.cz)

